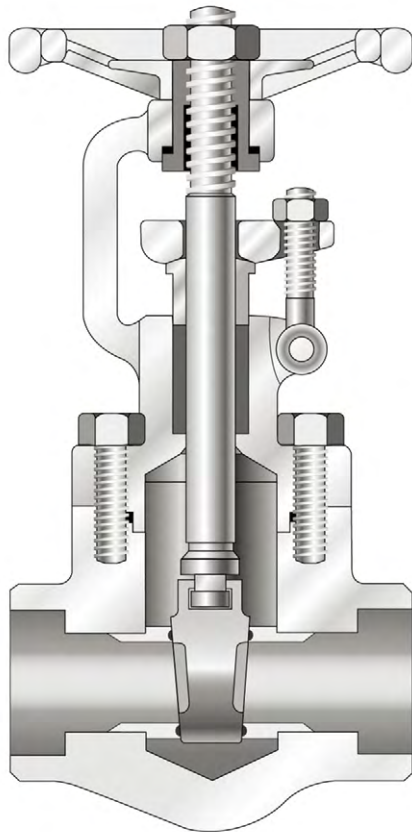


FORGED STEEL VALVE

- GATE VALVE
- GLOBE VALVE
- LIFT CHECK VALVE
- SWING CHECK VALVE

FORGED STEEL VALVE

GATE VALVE



DESCRIPTION

serves as efficient stop valve with flow in either direction. They are commonly used where a minimum of pressure drop is important because they offer practically no resistance to flow when fully open. Throttling is not conducive to accurate and consistent flow control. Also the valve may be damaged by the high velocity across the seats. They function best fully open or fully closed.

CLASS

API 800, 1500
ANSI 150, 300, 600, 900, 1500, 2500

SIZE

3/8", 1/2", 3/4", 1", 1 1/4", 1 1/2", 2"

MATERIAL

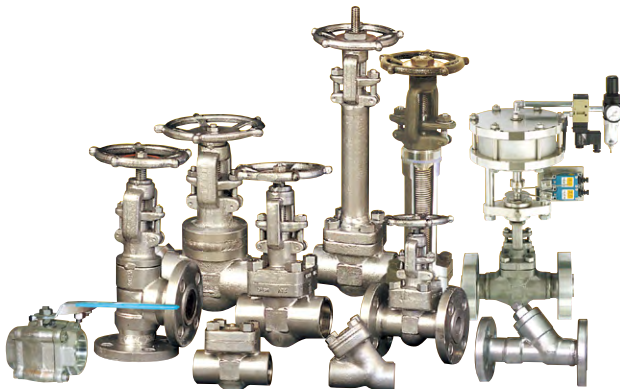
ASTM A105, A182-F5, A182-F9, A182-F11, A182-F22, A182-F304, A182-F316, A182-F304L, A182-F316L, A182-F321, A182-F347, A182-F51, A182-F91, A350-LF2
Other Materials also Available on Application

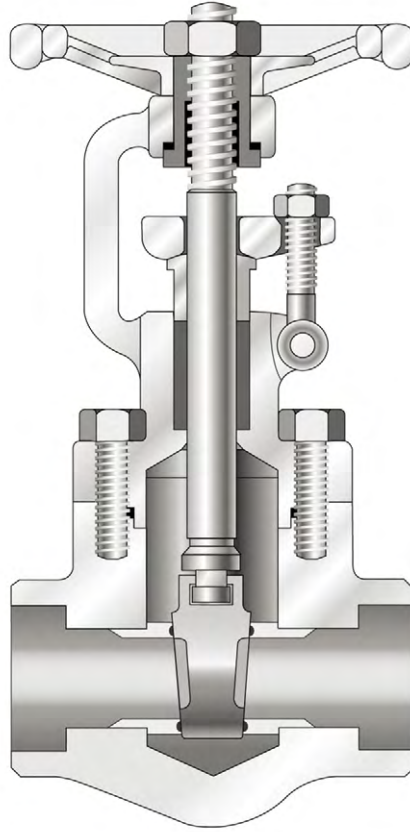
END CONNECTION

Socket welding, threaded
Butt welding, flanged

FEATURE

Bolted bonnet or welded bonnet
Outside screw & yoke
Solid wedge disc
Renewable seat





STANDARD MATERIAL SPECIFICATIONS

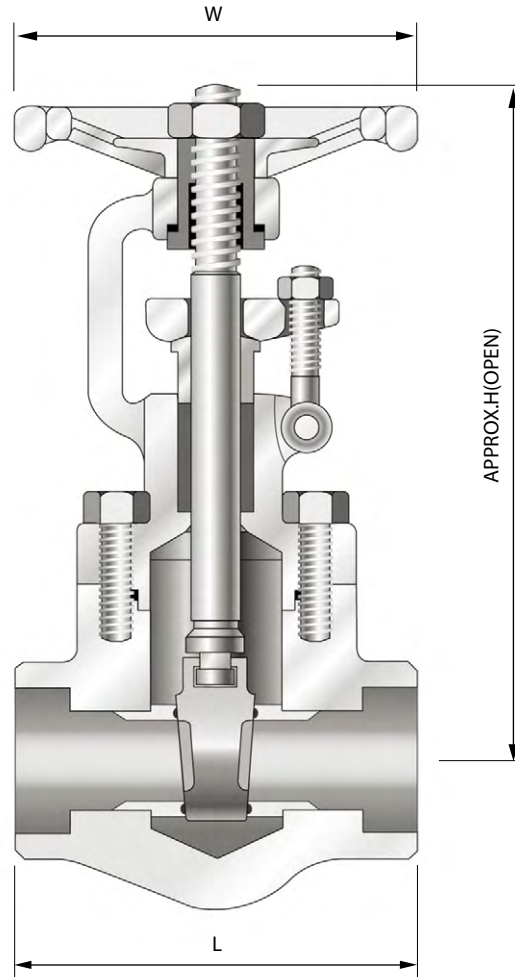
PART No.	PART NAME	Q'TY	A105	ASTM SPECIFICATIONS(SPECS-GRADES/TYPES)								
				A182				A182				
				F304	F304L	F316	F316L	F1	F5	F9	F11	F22
1	Body	1	A105	A182-F304	A182-F304L	A182-F316	A182-F316L	A182-F1	A182-F5	A182-F9	A182-F11	A182-F22
2	Bonnet	1	A105	A182-F304	A182-F304L	A182-F316	A182-F316L	A182-F1	A182-F5	A182-F9	A182-F11	A182-F22
4	Stem	1	A276-410	A276-304	A276-316					A276-410		
5	Disc	1	A217-CA15	A351-CF8	A351-CF8M					A217-CA15		
7	Seat Ring	2	A276-410+STL	A276-304+STL'	A276-316+STL'					A276-410+STL'		
12	Bonnet Bolt	4	A193-B7	A193-B8						A193-B7		
13	Gasket	1	SS304+Graphite		SS316+Graphite					SS304+Graphite		
14	Gland	1				A276-304						
15	Gland Packing	1set				Graphite						
16	Gland Flange	1	A105	A182 F304						A105		
17	Gland Bolt	2				A193-B8						
18	Gland Bolt Nut	2	A194-2H	A194-8						A194-2H		
19	Gland Bolt Pin	2				A276-304						
20	Sleeve	1				A276-410						
21	Sleeve Washer	2				A276-410						
22	Handwheel	1				A197						
23	Nameplate	1				Aluminum						
24	Handwheel Nut	1				SS400+Zn PLATE						

(1)A105 also Available with 0.25% Maximum Carbon.

Other Materials also Available on Application.

CLASS 600 & 800

BOLTED BONNET OS & Y



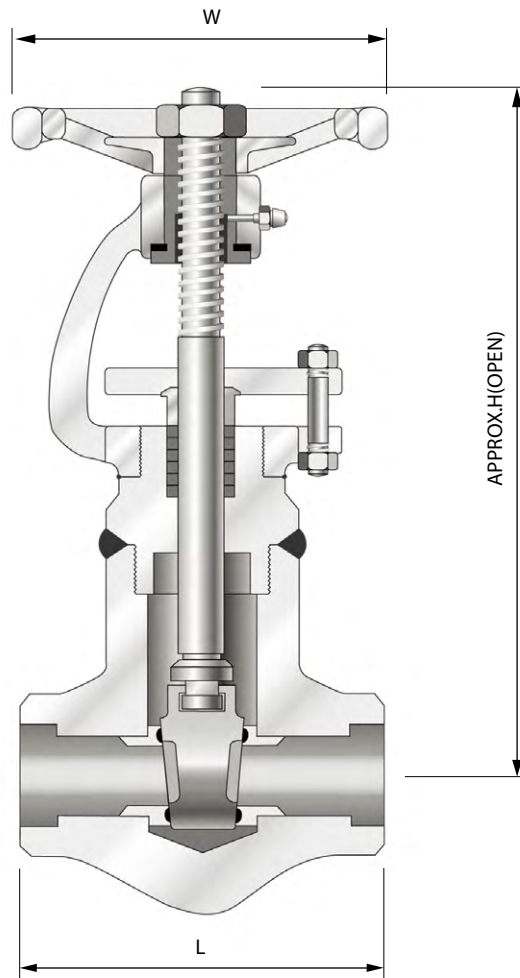
Bolted Bonnet

DIMENSION AND WEIGHT

CLASS	PORT	VALVE SIZE	CENTER TO TOP, OPEN	END TO END	HAND WHEEL DIAMETER	PORT DIAMETER	WEIGHT
			H	L	W	d	
		DN	mm	mm	mm	mm	kg
600 & 800	REDUCED	10	133	73	90	10	1.5
		15	133	73	90	10	1.4
		20	149	87	90	13	1.9
		25	178	96	105	19	2.7
		32	210	121	125	25	4.8
		40	222	141	125	30	5.4
		50	257	161	150	37	8.9
	FULL	10	133	73	90	10	1.4
		15	149	87	90	13	1.9
		20	178	96	105	19	2.7
		25	210	121	125	25	4.8
		32	222	141	125	30	5.4
		40	257	161	150	37	8.9
		50	292	170	165	43	11.2

CLASS 900 & 1500

WELDED BONNET



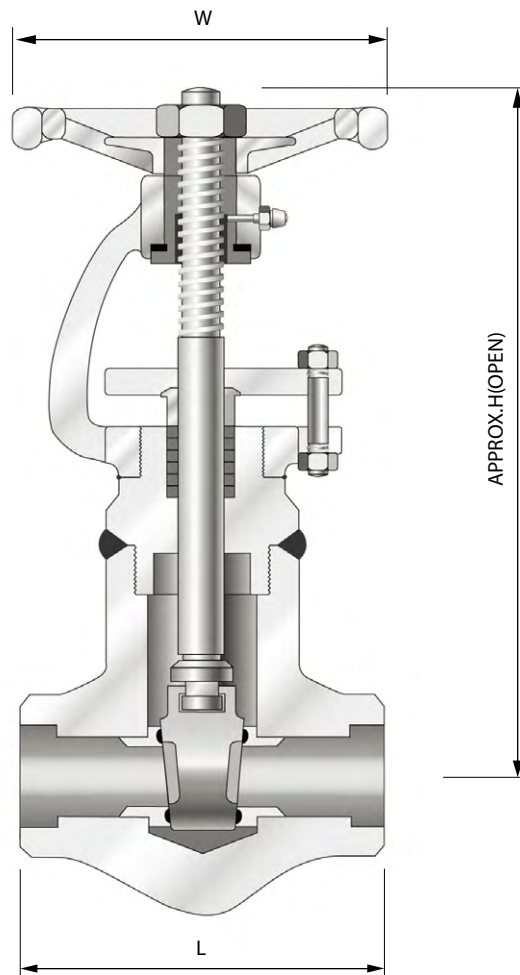
Seal Welded Bonnet

DIMENSION AND WEIGHT

CLASS	PORT	VALVE SIZE	CENTER TO TOP, OPEN	END TO END	HAND WHEEL DIAMETER	PORT DIAMETER	WEIGHT
			H	L	W	d	
		DN	mm	mm	mm	mm	kg
900 & 1500	FULL	10	233	96	150	10	2.3
		15	233	96	150	13	2.3
		20	245	121	150	19	4.8
		25	300	141	200	25	5.4
		32	331	161	200	30	8.9
		40	355	172	200	37	15.2
		50	439	200	245	37	25.4

CLASS 2500

WELDED BONNET

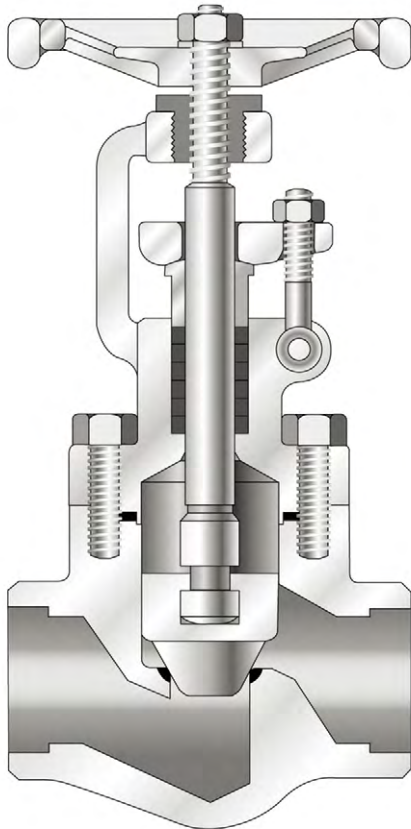


Seal Welded Bonnet

DIMENSION AND WEIGHT

CLASS	PORT	VALVE SIZE	CENTER TO TOP, OPEN	END TO END	HAND WHEEL DIAMETER	PORT DIAMETER	WEIGHT
			H	L	W	d	
		DN	mm	mm	mm	mm	kg
2500	FULL	15	245	121	150	11	2.9
		20	300	141	200	14	4.8
		25	331	161	200	20	5.4
		32	335	172	200	26	8.9
		40	439	200	245	29	26.8
		50	481	220	315	38	33.4

GLOBE VALVE



DESCRIPTION

Globe Valve is ideal for throttling service. Their flow characteristics permit accurate and repeatable flow control. However, caution must be exercised to avoid extremely close throttling when pressure drop exceeds 20%. This creates excessive noise, vibration, and possibly damage to valve and piping.

CLASS

API 800, 1500

ANSI 150, 300, 600, 900, 2500, 4500

SIZE

3/8", 1/2", 3/4", 1", 1 1/4", 1 1/2", 2"

MATERIAL

ASTM A105, A182-F5, A182-F9, A182-F11, A182-F22, A182-F304, A182-F316, A182-F304L, A182-F316L, A182-F321, A182-F347, A182-F51, A182-F91, A350-LF2

Other Materials also Available on Application

END CONNECTION

Socket welding, threaded

Butt welding, flanged

FEATURE

Bolted bonnet or welded bonnet

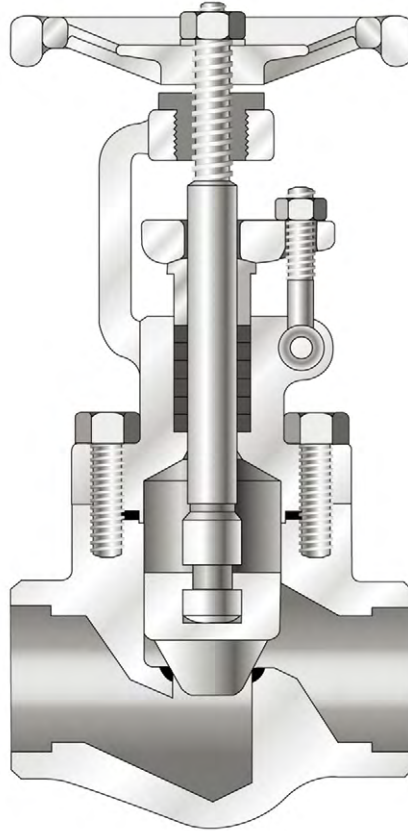
Outside screw & yoke

Plug disc

Integral seat

GLOBE VALVE

BOLTED BONNET OS & Y



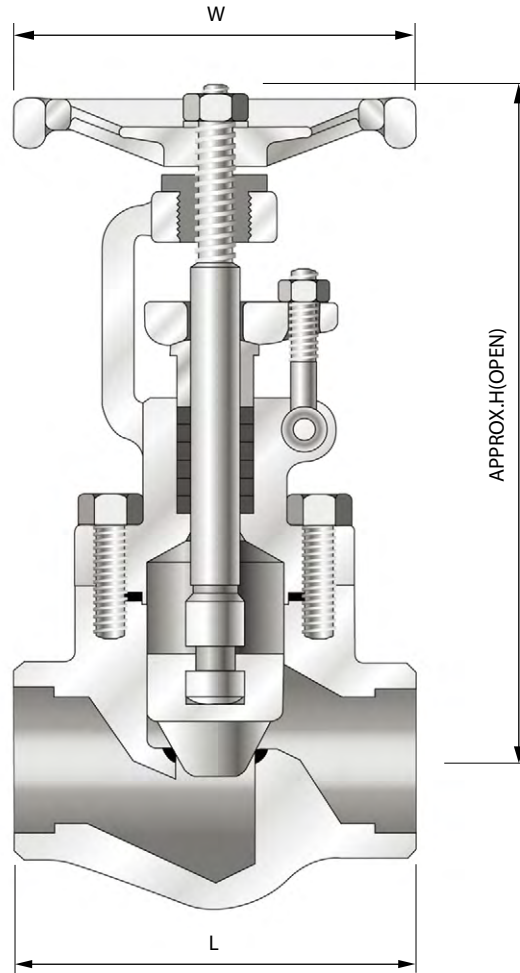
Bolted Bonnet

STANDARD MATERIAL SPECIFICATIONS

PART No.	PART NAME	QTY	A 105	ASTM SPECIFICATIONS(SPECS-GRADES/TYPES)								
				A 182				A 182				
				F304	F304L	F316	F316L	F1	F5	F9	F11	F22
1	Body	1	A105	A182-F304	A182-F304L	A182-F316	A182-F316L	A182-F1	A182-F5	A182-F9	A182-F11	A182-F22
2	Bonnet	1	A105	A182-F304	A182-F304L	A182-F316	A182-F316L	A182-F1	A182-F5	A182-F9	A182-F11	A182-F22
4	Stem	1	A276-410	A276-304	A276-316		A276-410					
5	Disc	1	A217-CA15	A351-CF8	A351-CF8M		A217-CA15					
12	Bonnet Bolt	4	A193-B7			A193-B8		A193+B7				
13	Gasket	1	SS304+Graphite		SS316+Graphite		SS304+Graphite					
14	Gland	1					A276-304					
15	Gland Packing	1set					Graphite					
16	Gland Flange	1	A105	A182+F304				A105				
17	Gland Bolt	2					A193-B8					
18	Gland Bolt Nut	2	A194-2H	A194-8				A194-2H				
19	Gland Bolt Pin	2					A276-304					
20	Sleeve	1					A276-410					
22	Handwheel	1					A197					
23	Nameplate	1					Aluminum					
24	Handwheel Washer	1					A108-1020					
25	Handwheel Net	1					A307-B					

CLASS 600 & 800

BOLTED BONNET OS & Y



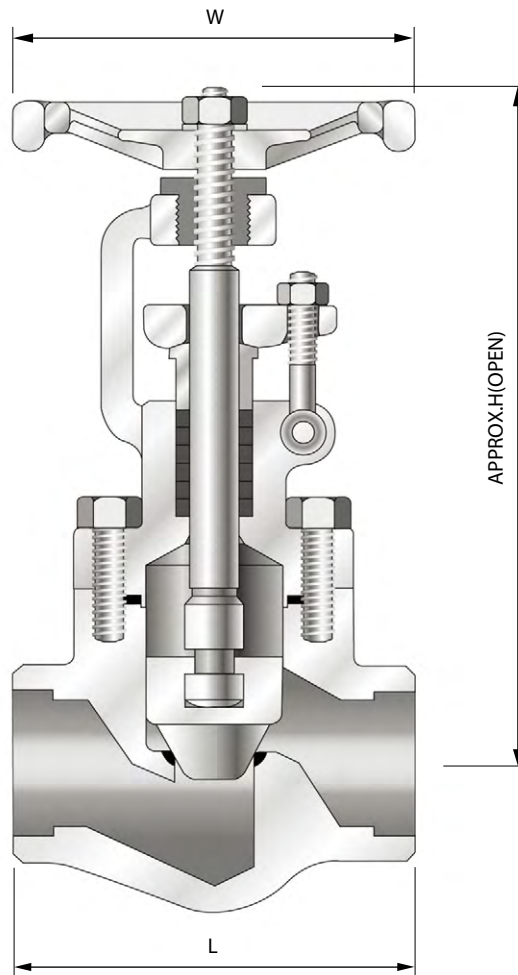
Bolted Bonnet

DIMENSION AND WEIGHT

CLASS	PORT	VALVE SIZE	CENTER TO TOP, OPEN	END TO END	HAND WHEEL DIAMETER	PORT DIAMETER	WEIGHT
			H	L	W	d	
			mm	mm	mm	mm	
600 & 800	REDUCED	10	134	73	90	8	1.5
		15	134	73	90	11	1.4
		20	146	87	90	13	1.9
		25	177	96	105	19	2.7
		32	205	121	125	25	4.9
		40	215	141	125	28	5.8
		50	248	161	150	36	9.3
	FULL	10	146	73	90	11	1.4
		15	146	87	90	13	1.9
		20	177	96	105	19	2.7
		25	205	121	125	22	4.9
		32	215	141	125	28	5.8
		40	248	161	150	32	9.3
		50	276	220	165	42	11.2

CLASS 900 & 1500

BOLTED BONNET OS & Y



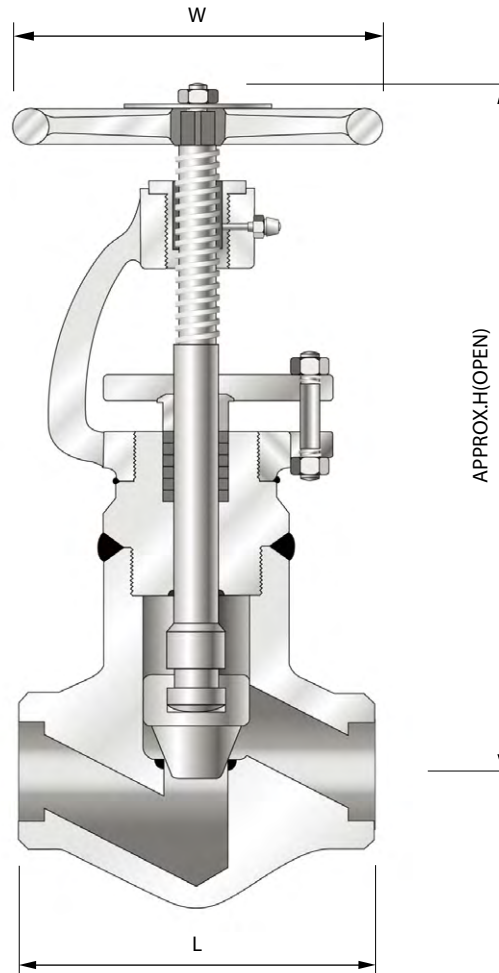
Bolted Bonnet

DIMENSION AND WEIGHT

CLASS	PORT	VALVE SIZE	CENTER TO TOP, OPEN	END TO END	HAND WHEEL DIAMETER	PORT DIAMETER	WEIGHT
			H	L	W	d	
		DN	mm	mm	mm	mm	kg
900 & 1500	REDUCED	10	177	87	105	8	1.9
		15	177	96	105	11	1.9
		20	177	96	105	13	2.7
		25	205	121	125	19	4.9
		32	215	141	125	25	5.8
		40	248	161	150	28	9.3
		50	276	172	165	36	20.4

CLASS 1500 & 2500

WELDED BONNET OS & Y

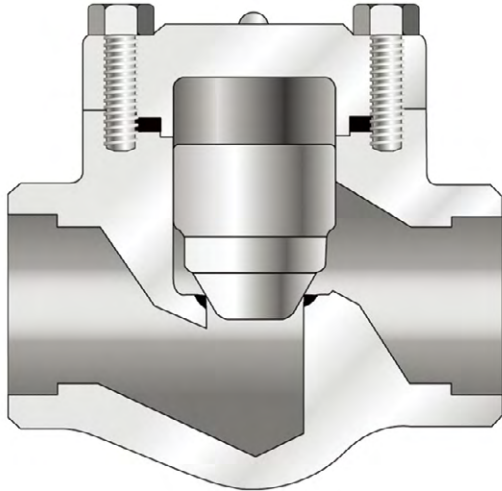


Seal Welded Bonnet

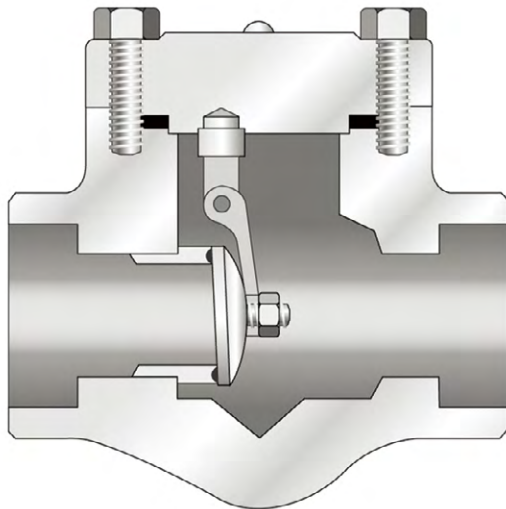
DIMENSION AND WEIGHT

CLASS	PORT	VALVE SIZE	CENTER TO TOP, OPEN	END TO END	HAND WHEEL DIAMETER	PORT DIAMETER	WEIGHT
			H	L	W	d	
		DN	mm	mm	mm	mm	kg
1500	FULL	15	233	96	150	13	6.75
		20	245	121	150	18	8.9
		25	299	141	200	19	16.5
		32	325	161	200	25	18.4
		40	347	172	200	32	26.4
		50	433	200	245	36	33.5
2500	FULL	15	245	121	150	11	18.4
		20	299	141	200	14	18.3
		25	325	161	200	19	18.3
		32	347	172	200	25	26.4
		40	433	200	245	28	26.4
		50	486	220	315	38	33.5

LIFT CHECK VALVE



LIFT CHECK



SWING CHECK

LIFT CHECK VALVE DESCRIPTION

They have an advantage over most other types of check valve in that they need only a relatively short lift to obtain full valve opening. The lift check valve uses a free-moving closure element that is placed above the seat. It prevents backflow and maintains pressure. The lift check valve is recommended to install in horizontal piping lines because the disc is pushed up by the flow until the flow reverses when gravity and down stream pressure close the closure element against the seat.

CLASS

API 800, 1500

ANSI 150, 300, 600, 900, 1500, 2500, 4500

SIZE

3/8", 1/2", 3/4", 1", 1 1/4", 1 1/2", 2"

MATERIAL

ASTM A105, A182-F5, A182-F9, A182-F11, A182-F22, A182-F304, A182-F316, A182-F304L, A182-F316L, A350-LF2

END CONNECTION

SOCKET WELDING, THREADED

BUTT WELDING, FLANGED

FEATURE

BOLTED COVER OR WELDED COVER

INTEGRAL SEAT

SWING CHECK VALVE DESCRIPTION

prevent reversal of flow through pipe lines. The swing check valve uses a hinged door to open during flow and to close against a pressure reversal. Swing check valve can be installed in horizontal or vertical upward flow piping. They offer low resistance to flow and are particularly suited to low velocity service

CLASS

API 800, 1500

ANSI 150, 300, 600, 900, 1500

SIZE

3/8", 1/2", 3/4", 1", 1 1/4", 1 1/2", 2"

MATERIAL

ASTM A105, A182-F5, A182-F9, A182-F11, A182-F22, A182-F304, A182-F316, A182-F304L, A182-F316L, A182-F321, A182-F347, A182-F51, A182-F91, A350-LF2

Other Materials also Available on Application

END CONNECTION

Socket welding, threaded

Butt welding, flanged

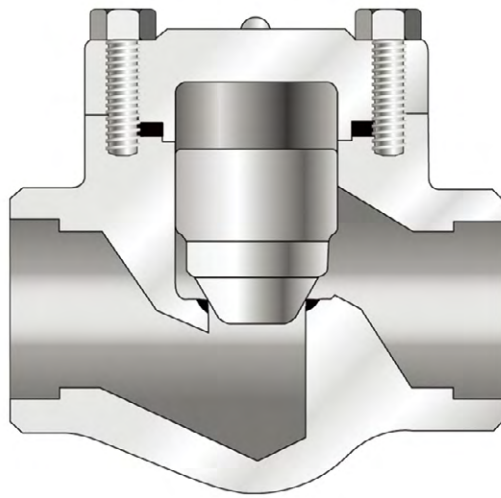
FEATURE

Bolted cover or welded cover

Renewable seat

LIFT CHECK VALVE

BOLTED COVER



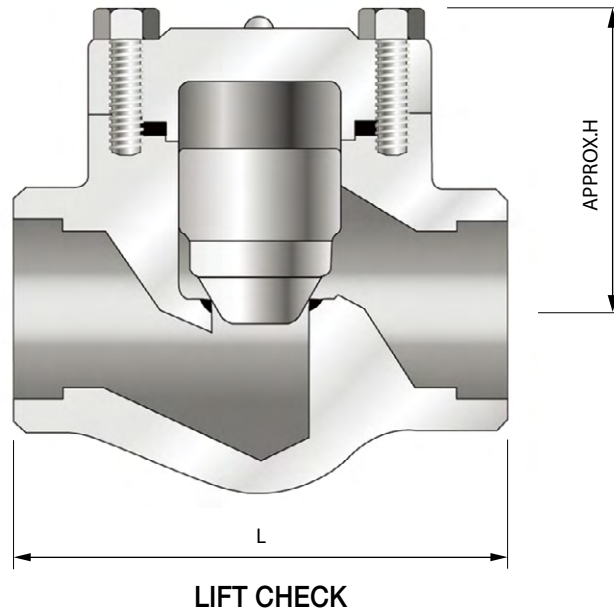
LIFT CHECK

STANDARD MATERIAL SPECIFICATIONS

NO.	PART NAME	Q'TY	MATERIAL-ASTM				
			A105	F304	F304L	F316	F316L
1	Body	1	A105	A182-F304	A182-F304L	A182-F316	A182-F316L
3	Cover	1	A105	A182-F304	A182-F304L	A182-F316	A182-F316L
5	Disc	1	A276-410	A276-304	A276-316		
12	Cover Bolt	4	A193-B7	A193-B8			
13	Gasket	1	SS304+Graphite			SS316+Graphite	
23	Nameplate	1	Aluminum				

CLASS 600 & 1500

BOLTED COVER

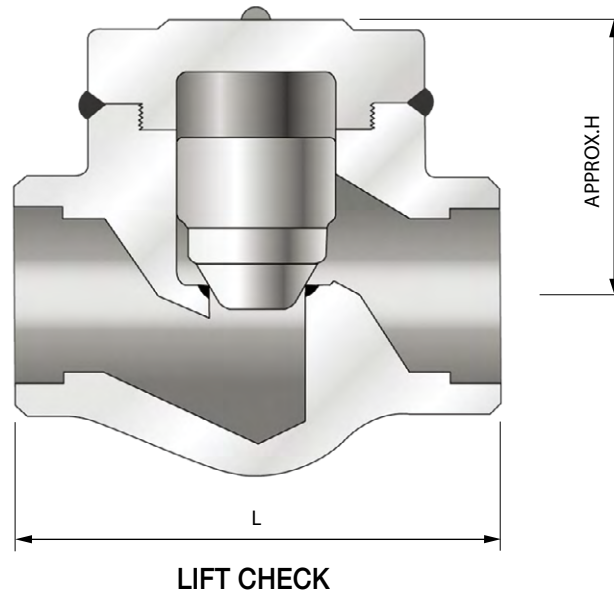


DIMENSIONS & WEIGHTS

CLASS	PORT	VALVE SIZE	CENTER TO TOP, OPEN	END TO END	PORT DIAMETER	WEIGHT
			H	L	d	
			DN	mm	mm	
600 & 800	REDUCED	10	51	73	8	1.3
		15	51	73	11	1.2
		20	55	87	13	1.3
		25	65	96	19	2.1
		32	76	121	25	4.0
		40	84	141	28	4.7
		50	101	161	36	7.1
	FULL	10	51	73	10	1.3
		15	55	87	13	1.3
		20	65	96	19	2.1
		25	76	121	22	4.0
		32	84	141	28	4.7
		40	101	161	32	7.1
		50	116	220	42	10.7
1500	REDUCED	10	65	87	8	1.2
		15	65	96	11	1.2
		20	65	96	13	2.1
		25	76	121	19	4.0
		32	84	141	25	4.7
		40	101	161	28	7.1
		50	116	172	36	10.5

CLASS 1500 & 2500

WELDED COVER

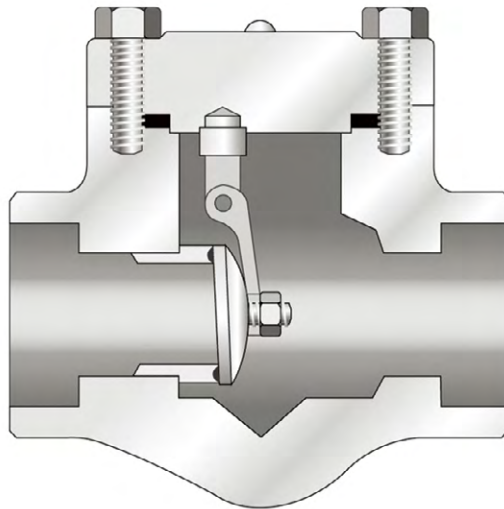


DIMENSIONS & WEIGHTS

CLASS	PORT	VALVE SIZE DN	CENTER TO TOP, OPEN	END TO END	PORT DIAMETER	WEIGHT kg
			H	L	d	
			mm	mm	mm	
1500	FULL	15	65	96	13	2.1
		20	73	121	18	4.0
		25	80	141	22	4.7
		32	100	161	28	7.1
		40	110	172	32	10.7
		50	140	200	35	12.5
2500	FULL	15	73	121	11	7.1
		20	80	141	14	7.1
		25	100	161	19	7.1
		32	110	172	25	10.7
		40	140	200	28	10.7
		50	160	220	38	12.5

SWING CHECK VALVE

BOLTED COVER



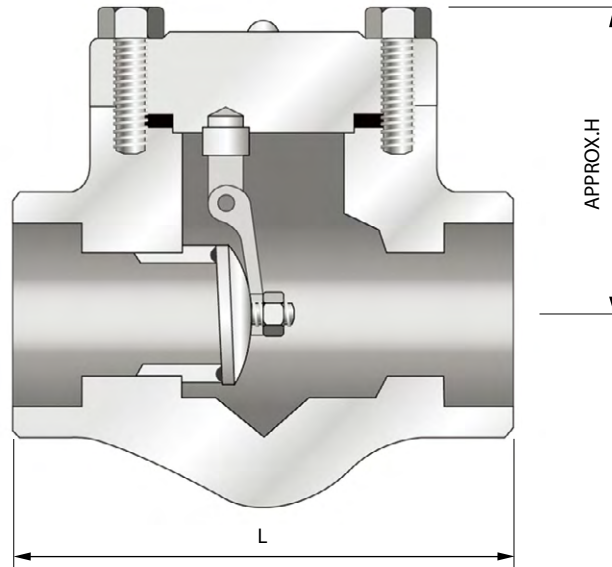
SWING CHECK

STANDARD MATERIAL SPECIFICATIONS

NO.	PART NAME	Q'TY	MATERIAL-ASTM				
			A105	F304	F304L	F316	F316L
1	Body	1	A105	A182-F304	A182-F304L	A182-F316	A182-F316L
3	Cover	1	A105	A182-F304	A182-F304L	A182-F316	A182-F316L
5	Disc	1	A276-410	A276-304		A276-316	
7	Seat Ring	1	A276-410	A276-304		A276-316	
8	Retaining Nut	1	A194-2H		A194-8		
9	Hinge	1				A351-CF8M	
10	Hinge Pin	1			A276-316		
11	Supporter	1				A276-316	
12	Cover Bolt	4	A193-B7		A193-B8		
13	Gasket	1	SS304+Graphite			SS316+Graphite	
23	Nameplate	1	Aluminum				

CLASS 800 & 1500

BOLTED COVER



SWING CHECK

DIMENSIONS & WEIGHTS

CLASS	PORT	VALVE SIZE	CENTER TO TOP, OPEN	END TO END	PORT DIAMETER	WEIGHT
			H	L	d	
			mm	mm	mm	
800	REDUCED	10	51	73	10	1.1
		15	51	73	10	1.0
		20	55	87	13	1.4
		25	65	96	19	2.2
		32	76	121	25	4.0
		40	84	141	30	4.1
		50	101	161	37	6.0
	FULL	10	51	73	10	1.0
		15	55	87	13	1.4
		20	65	96	19	2.2
		25	76	121	25	4.0
		32	84	141	30	4.1
		40	101	161	37	6.0
		50	116	170	43	10.6
1500	REDUCED	10	65	87	10	1.4
		15	65	96	13	1.4
		20	65	96	13	2.2
		25	76	121	19	4.0
		32	84	141	25	4.1
		40	101	161	30	6.0
		50	116	172	37	9.3



Head Office & Factory

51567, 80, Gongdan-ro, Seongsan-gu, Changwon-si,
Gyeongsangnam-do, Korea
TEL 82-55-268-3719 FAX 82-55-286-0281

R&BD Center

TEL 82-55-268-3810~9 FAX 82-55-286-3804
E-mail : mst@pkvalve.co.kr

Service Center

TEL 82-55-286-0638 FAX 82-55-286-0639