

ENERPAC®

POWERFUL SOLUTIONS. GLOBAL FORCE.



HSL
Hydraulic Supplies Ltd.





SINGLE SPEED, ULTRA-HIGH PRESSURE HYDRAULIC HAND PUMP, 45 IN3 USABLE OIL, 10,000 PSI

SKU: E-11100

SPECIFICATIONS:

Maximum Operating Pressure (psi)
10,000
Pressure Rating (psi) 2nd Stage
10,000
Cylinder Compatability
Single-acting
Reservoir Capacity (in3)
45
Usable Oil Capacity (in3)
45
Maximum Flow at Rated Pressure
.152 in3/stroke
Oil Displacement per St



PRODUCT DESCRIPTION:

Enerpac ultra-high-pressure, hydraulic hand pumps are offered as single-stage or 2 stage manual pumps that can handle up to 40,000 psi (2800 bar). Typical industrial applications include lifting, testing, calibration, maintenance, and repair. The P2282 m



SINGLE SPEED, ULTRA-HIGH PRESSURE HYDRAULIC HAND PUMP, 45 IN3 USABLE OIL, 40,000 PSI

SKU: E-11400

SPECIFICATIONS:

Maximum Operating Pressure (psi)
40,000
Pressure Rating (psi) 2nd Stage
40,000
Cylinder Compatability
Single-acting
Reservoir Capacity (in3)
45
Usable Oil Capacity (in3)
45
Maximum Flow at Rated Pressure
.038 in3/stroke
Oil Displacement per St



PRODUCT DESCRIPTION:

Model: 11400 | ECCN: EAR99 | Harmonization: 8413200000
Series: 11 | Product Line: Industrial Tools
Enerpac ultra-high-pressure, hydraulic hand pumps are offered as single-stage or 2 stage manual pumps that can handle up to 40,000 psi (2800 b



45116, ULTRA-HIGH PRESSURE TUBING, 3.25" TUBE, .38" OD

SKU: E-45116

SPECIFICATIONS:

PRODUCT DESCRIPTION

40,000 psi maximum operating pressure for use with ultra-high pressure hand pumps

TECHNICAL SPECIFICATIONS

Item Weight: 0.09lbs

FOB: N

Country of Origin: United States

Tariff Code: 7304499390

Shipping Weight: 1lb



PRODUCT DESCRIPTION:

4" tube

.38" Outside diameter

2800 bar maximum operating pressure

Use with ultra-high pressure hand pumps



45136, ULTRA-HIGH PRESSURE TUBING, 11.25" TUBE, .38" OD

SKU: E-45136

SPECIFICATIONS:

Model: 45136 | Series: 45- | Product Line: Industrial Tools

40,000 psi maximum operating pressure for use with ultra-high pressure hand pumps



PRODUCT DESCRIPTION:

40,000 psi maximum operating pressure for use with ultra-high pressure hand pumps



72750, ULTRA-HIGH PRESSURE FITTING, 2-WAY SHUT-OFF VALVE, 40,000 PSI



SKU: E-72750

SPECIFICATIONS:

Maximum Operating Pressure (psi)
40,000

PRODUCT DESCRIPTION:

For 40,000 psi applications requiring a shut-off valve or gauge snubber. Made of 318 Stainless Steel and utilizing .38-inch cone fittings, it is the perfect selection for use with your Ultra-High Pressure Hand Pump.



A604, REGULAR HYDRAULIC SPEE-D-COUPLER, COMPLETE SET



SKU: E-A604

SPECIFICATIONS:

PRODUCT DESCRIPTION

The Enerpac Spee-D-Coupler makes quick connections to hydraulic lines. It is intended for applications with a flow rate up to 462 in³/min (7.6 liters) per minute. It is the optimum choice for medium-duty applications such as those using

PRODUCT DESCRIPTION:

3/8" Regular Spee-D-Coupler®
For medium duty applications; for use with hand pumps
Includes female steel dust cap
Dimension A is total length when male and female halves are connected.



A630, REGULAR HYDRAULIC COUPLER, COMPLETE SET

SKU: E-A630

SPECIFICATIONS:

PRODUCT DESCRIPTION

This Enerpac A-630 regular coupler is 700-bar quick coupler for attaching hydraulic lines. It is 3.09" in length and has a maximum flow capacity of 462 cubic inches/min. It has 1/4" National Pipe Thread Fuel (NPTF) connections on each



PRODUCT DESCRIPTION:

1/4" Regular Coupler

For use with small cylinders and hand pumps

Includes female steel dust cap

Dimension A is total length when male and female halves are connected.



4 TON, FLANGE ALIGNMENT TOOL

SKU: E-ATM4

SPECIFICATIONS:

Maximum Reaction Force (imperial ton)

4

Minimum Bolt Size (in)

1

Maximum Flange Wall Thickness (in)

1.18 - 5.23

Reaction Force 2 Max (imperial ton)

4

Weight (lbs)

19



PRODUCT DESCRIPTION:

Model: ATM4 | ECCN: EAR99 | Harmonization: 8205595560

Series: ATM | Product Line: Bolting Tools

Enerpac's ATM-Series Tools help correct flange misalignment and allow bolts to be placed into joints. This alignment takes place during pipe work



PRODUCT DESCRIPTION:

Model: ATP1500 | ECCN: EAR99 | Harmonization: 8413500070
Series: ATP | Product Line: Bolting Tools
General purpose, high pressure air driven pump unit for products requiring up to 21,750 psi hydraulic pressure
Compact, lightweight, rugged s



HIGH PRESSURE HYDRAULIC AIR TENSIONING PUMP, 21,750 PSI

SKU: E-ATP1500

SPECIFICATIONS:

Maximum Operating Pressure (psi)
21,750
Reservoir Capacity (in3)
231
Usable Oil Capacity (in3)
231
Usable Oil Capacity (gal)
1
Maximum Flow at Rated Pressure
4 in3/min
Output Flow Rate (in3/min) at 0 psi
26
Output Flow Rate (in3/min) at 21750



PRODUCT DESCRIPTION:

All Master Puller Sets include a Grip Puller, a Cross Bearing Puller, a Bearing Cup Puller and a Bearing Separator which can be ordered separately.
Supplied with a full hydraulic set including pump, hose, cylinder, gauge and gauge adaptor in a storage ca



24 TON, HYDRAULIC MASTER PULLER SET WITH HAND PUMP

SKU: E-BHP2751G

SPECIFICATIONS:

Maximum Operating Pressure (psi)
10,000
Capacity (imperial tons)
24
Pump Power Source
Hand Pump
Puller Power Source
Hydraulic
Weight (lbs)
198



BRP106C, 11.6 TON CAPACITY, 6.00 IN STROKE, PULL HYDRAULIC CYLINDER

SKU: E-BRP106C

SPECIFICATIONS:

BRP-Series Hydraulic Pull Cylinders include replaceable links or lugs which allow for easy attachment to the pulling application. These are a single-acting spring return design, and feature plunger blow-out protection and a corrosion resistant hard chrome



PRODUCT DESCRIPTION:

Maximum Operating Pressure (psi)
10,000
Capacity Class (tonnage)
10
Maximum Cylinder Capacity Retract (short tons)
11.6
Stroke (in)
5.91
Collapsed Height A (in)



HIGH FLOW HYDRAULIC COUPLER, COMPLETE SET

SKU: E-C604

SPECIFICATIONS:

The C-Series High Flow Hydraulic Coupler is the standard used on most Enerpac pumps and cylinders up to 10,000 psi (700 bar). These 3/8" high flow couplers provide a quick and secure connections, allowing a flow up to 2100 in³/min (35 liters) per minute.



PRODUCT DESCRIPTION:

Maximum Operating Pressure (psi)
10,000
Maximum Flow Capacity (in³/min)
2500
Anatomy
Complete Set



CH604, HIGH FLOW HYDRAULIC COUPLER, MALE HALF



SKU: E-CH604

SPECIFICATIONS:

PRODUCT DESCRIPTION

The C-Series High Flow Hydraulic Coupler is the standard used on most Enerpac pumps and cylinders up to 10,000 psi (700 bar). These 3/8" high flow couplers provide a quick and secure connections, allowing a flow up to 2100 in³/min (35

PRODUCT DESCRIPTION:

3/8" High Flow Couplers
Standard equipment on most Enerpac cylinders
Recommended for use on all Enerpac pumps and cylinders where space and porting permits
Include "2-in-1" dust cap for use on male and female coupler halves
Dimension A is total length whe



CL655950SR, SPINDLE REPAIR KIT



SKU: E-CL655950SR

SPECIFICATIONS:

PRODUCT DESCRIPTION

Release Valve Assembly, For Use With Grainger Item Number 4Z480, For Use With Mfr. Model Number P39, Fits Brand Enerpac

TECHNICAL SPECIFICATIONS

Promotion Restriction: Not eligible for promotion
For Use With Grainger Item Number: 4Z48

PRODUCT DESCRIPTION:

The Enerpac CL655950SR is a spindle repair kit for the lightweight hand pumps.



CL915900SR, HANDLE ASM.REPL.KIT-WRAP

SKU: E-CL915900SR

SPECIFICATIONS:

Repair part for lightweight hand pumps



PRODUCT DESCRIPTION:

Repair part for lightweight hand pumps



CLL506K, KIT,REPAIR,CLL 50 TONS

SKU: E-CLL506K

SPECIFICATIONS:

INCLUDES

(1) CLL506K, KIT,REPAIR,CLL 50 TONS

PRODUCT DESCRIPTION

Single-Acting Locknut Cylinders (CLL, HCL-Series and equivalent)

TECHNICAL SPECIFICATIONS

Is Discontinued By Manufacturer: No

Manufacturer: Enerpac

ASIN: B07BGBMJ3T

Item Weight: 1.20lb

Shi



PRODUCT DESCRIPTION:

Repair Kit For 50 Ton CLL Series Cylinders, ENERPAC (CLL506K)



CR333040SR, PLUNGER ASM.REPL.KIT

SKU: E-CR333040SR

SPECIFICATIONS:

PRODUCT DESCRIPTION

Enerpac® plunger assembly replacement kit, repair part for lightweight hand pumps.

TECHNICAL SPECIFICATIONS

Manufacturer Part Number: CR333040SR

Manufacturer: Enerpac Tool Group

Brand Name: ENERPAC®

Package Quantity: 1/Each

Item Weigh



PRODUCT DESCRIPTION:

Enerpac® Plunger Assembly Kit, For Use With: P392AL, P392ALSS, P392E024, P-391 and P-392 Hydraulic Hand Pump, Includes: (2) Retaining Ring, (1) DC106061SR1 Cross Pin, (1) Back-Up Ring, and (1) O-Ring



CR400, HIGH FLOW HYDRAULIC COUPLER, FEMALE HALF

SKU: E-CR400

SPECIFICATIONS:

The C-Series High Flow Hydraulic Coupler is the standard used on most Enerpac pumps and cylinders up to 10,000 psi (700 bar). These 3/8" high flow couplers provide a quick and secure connections, allowing a flow up to 2100 in3/min (35 liters) per minute.



PRODUCT DESCRIPTION:

C-Series 3/8 High Flow Hydraulic Couplers make quick connections to hydraulic lines with a flow up to 2,100 in3/min (35 liters) per minute.

DA5816900SR, AIR MOTOR ASM

SKU: E-DA5816900SR

SPECIFICATIONS:

Model: DA5816900SR | ECCN: EAR99 | Harmonization:
8412390080
Series: | Product Line:
PA-Series



PRODUCT DESCRIPTION:

Model: DA5816900SR | ECCN: EAR99 | Har-
monization: 8412390080
Series: | Product Line:
PA-Series

DA8786900SR RELEASE VALVE ASSEMBLY

SKU: E-DA8786900SR

SPECIFICATIONS:

TECHNICAL SPECIFICATIONS
UOM: EA
Description: Release Valve Assembly
Weight: N/A
Component Type: Service Parts
Tool Type: Industrial
Tool Sub-type: Valve
Manufacturer: Enerpac
Application: High force tools for all industrial applications.
Item Weight: 0.



PRODUCT DESCRIPTION:

UOM: EA
: Release Valve Assembly
Weight: N/A
Component Type: Service Parts
Tool Type: Industrial
Tool Sub-type: Valve
Manufacturer: Enerpac
Application: High force tools for all industrial ap-
plications.



DA8802900SR-560, RELIEF VALVE ASM 560 BAR

SKU: E-DA8802900SR

SPECIFICATIONS:

PRODUCT DESCRIPTION

Fittings are used for connecting hydraulic hoses, cylinders, components, power sources, tubes and gauges in a hydraulic system. Enerpac hydraulic fittings provide flexible, safe and leak-free connections.

TECHNICAL SPECIFICATIONS

Maxim



PRODUCT DESCRIPTION:

Hex nipple fitting for connecting hydraulic hose fittings (sold separately) within a system
0.63" hex nut for tightening or loosening
1/4" NPTF male threaded connection on both ends
1.50" overall length
Rated for 10,000 psi pressure



DC8030900SR, AIR MOTOR REPLACEMENT KIT FOR ZA4 PUMPS

SKU: E-DC8030900SR

SPECIFICATIONS:

DC8030900SR, Air Motor Replacement Kit for ZA4 Pumps



PRODUCT DESCRIPTION:

DC8030900SR, Air Motor Replacement Kit for ZA4 Pumps



30 TON, HEAVY-DUTY CATERROLLER LOAD SKATE SET



SKU: E-ERS30

SPECIFICATIONS:

Capacity (imperial tons)
30

PRODUCT DESCRIPTION:

Sets include all components necessary to handle a variety of applications. Two ELB1 link-up bars, two ERH1 handles (34.4" long) and one EMB1 metal box are included. Optional long handle ERH2 (46.4") also available.

Rugged and sturdy construction for long



10 TON, HYDRAULIC FLANGE SPREADER, 8.50 IN MAXIMUM SPREAD



SKU: E-FS109

SPECIFICATIONS:

Maximum Operating Pressure (psi)
10,000
Maximum Spread (in)
8.5
Power Source
Hydraulic
Spreading Force (imperial tons)
10
Maximum Spreading Force (ton)
10
Capacity (imperial tons)
10
Stroke (in)
2.13
Maximum Flange Thickness (in)
2 x 3.63

PRODUCT DESCRIPTION:

Lightweight, ergonomic design for ease of use
Adjustable jaw widths from 2.75" to 6.10" for a wide range of applications

Single-acting, spring return RC Series cylinders for fast trouble free operation. Discontinuation Notice

The FS109 has been discontinued







5 TON, HYDRAULIC FLANGE SPREADER, 6.10 IN MAXIMUM SPREAD



SKU: E-FS56

SPECIFICATIONS:

- Maximum Operating Pressure (psi) 10,000
- Maximum Spread (in) 6.1
- Power Source Hydraulic
- Spreading Force (imperial tons) 5
- Maximum Spreading Force (ton) 5
- Capacity (imperial tons) 5
- Stroke (in) 1.50
- Maximum Flange Thickness (in) 2 x 2.25
- Stu

PRODUCT DESCRIPTION:

Lightweight, ergonomic design for ease of use
 Adjustable jaw widths from 2.75" to 6.10" for a wide range of applications
 Single-acting, spring return RC Series cylinders for fast trouble free operation. Discontinuation Notice
 The FS56 has been disconti



14 TON, HYDRAULIC INDUSTRIAL SPREADER, 3.16 IN MAXIMUM SPREAD



SKU: E-FSH-14

SPECIFICATIONS:

- Maximum Operating Pressure (psi) 10,000
- Maximum Spread (in) 3.16
- Power Source Hydraulic
- Maximum Spreading Force (ton) 14
- Maximum Spreading Force (kN) 125
- Capacity (imperial tons) 14
- Tip Clearance (in) 0.24
- Oil Capacity (in3) 4.76
- Weight (l)

PRODUCT DESCRIPTION:

Model: FSH14 | ECCN: EAR99 | Harmonization: 8467895090
 Series: FS | Product Line: Industrial Tools, Bolting Tools
 The FSH14 Flange Spreader with its integral cylinder makes it easy to apply up to 14 tons of force (118 kN). It uses hydraulic



FZ1055, HIGH PRESSURE FITTING, ADAPTER, 10,000 PSI MAXIMUM OPERATING PRESSURE, CONNECTION FROM 3/8" NPTF FEMALE TO 1/4" NPTF MALE

SKU: E-FZ1055



SPECIFICATIONS:

PRODUCT DESCRIPTION

Fittings are used for connecting hydraulic hoses, cylinders, components, power sources, tubes and gauges in a hydraulic system. Enerpac hydraulic fittings provide flexible, safe and leak-free connections.

TECHNICAL SPECIFICATIONS

Maxim

PRODUCT DESCRIPTION:

Adaptor fitting for connecting hydraulic components
Steel for strength and durability
3/8"-18 NPTF female connection on one end and 1/4"-18 NPTF male on the other
Maximum working pressure of 10,000 psi



FZ1605, HIGH PRESSURE FITTING, COUPLING, 10,000 PSI MAXIMUM OPERATING PRESSURE, CONNECTION FROM 1/4" NPTF FEMALE TO 1/4" NPTF FEMALE

SKU: E-FZ1605



SPECIFICATIONS:

PRODUCT DESCRIPTION

Hydraulic Hose Adapter, For Hose Type Hydraulic, Thread Size 1/4 In.-18, Fitting Shape Straight, Rigid, 10,000 psi, Includes O-Ring No, Crimpable No, Compatible Pipe Size 1/4 in, Hose Fitting A Gender Female, Hose Fitting B Gender Fema

PRODUCT DESCRIPTION:

NPTF-to-NPTF steel hydraulic hose adapters are typically used in hydraulic hose assemblies to convey fuel in automotive applications. They connect compatible hydraulic hoses to pipe or equipment that has different thread sizes. These steel fittings are du



**FZ1608, HIGH PRESSURE FITTING, HEX NIPPLE,
10,000 PSI MAXIMUM OPERATING PRESSURE,
CONNECTION FROM 1/4" NPTF MALE TO 1/4" NPTF**

SKU: E-FZ1608

SPECIFICATIONS:

PRODUCT DESCRIPTION

Fittings are used for connecting hydraulic hoses, cylinders, components, power sources, tubes and gauges in a hydraulic system. Enerpac hydraulic fittings provide flexible, safe and leak-free connections.

TECHNICAL SPECIFICATIONS

Maxim



PRODUCT DESCRIPTION:

Hex nipple fitting for connecting hydraulic hose fittings (sold separately) within a system
0.63" hex nut for tightening or loosening
1/4" NPTF male threaded connection on both ends
1.50" overall length
Rated for 10,000 psi pressure



**FZ1614, HIGH PRESSURE FITTING, COUPLING, 10,000
PSI MAXIMUM OPERATING PRESSURE, CONNECTION
FROM 3/8" NPTF FEMALE TO 3/8" NPTF FEMALE**

SKU: E-FZ1614

SPECIFICATIONS:

PRODUCT DESCRIPTION

Fittings are used for connecting hydraulic hoses, cylinders, components, power sources, tubes and gauges in a hydraulic system. Enerpac hydraulic fittings provide flexible, safe and leak-free connections.

TECHNICAL SPECIFICATIONS

Maxim



PRODUCT DESCRIPTION:

Coupling
Connection from 3/8" NPTF female to 3/8" NPTF female
10,000 psi Maximum operating pressure
Provides flexible, safe and leak-free connections
Used to connect all cylinders, components, power sources, tubes, gauges and hoses in a hydraulic system



FZ1615, HIGH PRESSURE FITTING, REDUCING CONNECTOR, 10,000 PSI MAXIMUM OPERATING PRESSURE, CONNECTION FROM 3/8" NPTF FEMALE

SKU: E-FZ1615

SPECIFICATIONS:

Fittings are used for connecting hydraulic hoses, cylinders, components, power sources, tubes and gauges in a hydraulic system. Enerpac hydraulic fittings provide flexible, safe and leak-free connections.

PRODUCT DESCRIPTION:

Maximum Operating Pressure (psi)
10,000
Connection From
3/8" NPTF Female
Connection To
1/4" NPTF Female



FZ1617, HIGH PRESSURE FITTING, HEX NIPPLE, 10,000 PSI MAXIMUM OPERATING PRESSURE, CONNECTION FROM 3/8" NPTF MALE TO 3/8" NPTF

SKU: E-FZ1617

SPECIFICATIONS:

PRODUCT DESCRIPTION

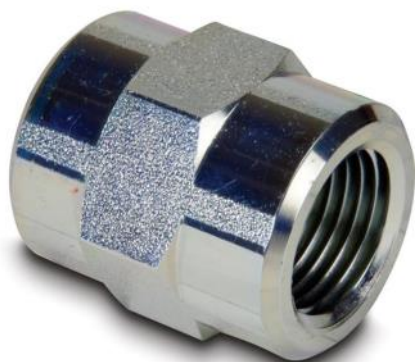
Fittings are used for connecting hydraulic hoses, cylinders, components, power sources, tubes and gauges in a hydraulic system. Enerpac hydraulic fittings provide flexible, safe and leak-free connections.

TECHNICAL SPECIFICATIONS

Maxim

PRODUCT DESCRIPTION:

3/8" Regular Spee-D-Coupler®
For medium duty applications; for use with hand pumps
Includes female steel dust cap
Dimension A is total length when male and female halves are connected.



FZ1625, HIGH PRESSURE FITTING, REDUCING CONNECTOR, 10,000 PSI MAXIMUM OPERATING PRESSURE, CONNECTION FROM 1/2" NPTF FEMALE

SKU: E-FZ1625

SPECIFICATIONS:

PRODUCT DESCRIPTION

The Enerpac FZ1625 is a high-pressure fitting (Reducing Connector) with a connection from 1/2" NPTF Female to 3/8" NPTF Female, offering a maximum operating pressure of 10,000 psi. It is used to connect all cylinders, components, power

PRODUCT DESCRIPTION:

Connection from 1/2" NPTF Female to 3/8" NPTF Female
High pressure fitting (Reducing Connector)
10,000 psi maximum operating pressure



FZ1630, HIGH PRESSURE FITTING, REDUCER, 10,000 PSI MAXIMUM OPERATING PRESSURE, CONNECTION FROM 1/4" NPTF FEMALE TO 3/8" NPTF MALE

SKU: E-FZ1630

SPECIFICATIONS:

PRODUCT DESCRIPTION

Fitting are used for connecting hydraulic hoses, cylinders, components, power sources, tubes and gauges in a hydraulic system. Enerpac hydraulic fittings provide flexible, safe and leak-free connections.

TECHNICAL SPECIFICATIONS

Item:

PRODUCT DESCRIPTION:

Thread- 3/8" nptf to 1/4" nptf
Bushing
All tubing wall thicknesses based on a 55000 psi minimum tensile strength



FZ1633, HIGH PRESSURE FITTING, ADAPTER, 10,000 PSI MAXIMUM OPERATING PRESSURE, CONNECTION FROM 1/2" NPTF FEMALE TO 1/4" NPTF MALE

SKU: E-FZ1633

SPECIFICATIONS:

PRODUCT DESCRIPTION

Fittings are used for connecting hydraulic hoses, cylinders, components, power sources, tubes and gauges in a hydraulic system. Enerpac hydraulic fittings provide flexible, safe and leak-free connections.

TECHNICAL SPECIFICATIONS

Maxim



PRODUCT DESCRIPTION:

High pressure fitting (Adapter)
Connection from 1/2" NPTF Female to 1/4" NPTF Male
10,000 psi maximum operating pressure



HYDRAULIC PRESSURE GAUGE, 2.50 IN. FACE, LOWER MOUNT, GLYCERINE FILLED, 10,000 MAXIMUM PSI

SKU: E-G2535L

SPECIFICATIONS:

Maximum Operating Pressure (psi)
10,000
Style
Glycerine Filled
Accuracy Percentage of Full Scale
1.5
Mount
Lower Mount
Thread (in)
1/4 NPTF
Major Graduation (psi)
2000
Minor Graduation (psi)
200



PRODUCT DESCRIPTION:

This G-Series Liquid Filled Pressure Gauge contains glycerin to protect pressure sensing parts from vibration, sudden pressure changes, and moisture. The dual scale face shows both psi and bar readings, and the extensive range includes a wide selection of



GA1, GAUGE ADAPTOR, 1/2 IN. NPT GAUGE PORT, 10,000 PSI

SKU: E-GA1

SPECIFICATIONS:

PRODUCT DESCRIPTION

For easy mounting of a pressure gauge into your system. Male end screws into pump or cylinder port, female end accepts hose or coupler, third port is for gauge connection. Simplifies gauge installation and reading. Gauge port 1/2 in NP



PRODUCT DESCRIPTION:

For easy mounting of a pressure gauge into your system
Male end screws into pump or cylinder port, female end accepts hose or coupler, third port is for gauge connection
Simplifies gauge installation and reading



GA3, GAUGE ADAPTOR, 1/4 IN. NPT GAUGE PORT, 10,000 PSI

SKU: E-GA3

SPECIFICATIONS:

PRODUCT DESCRIPTION

These hydraulic pressure gauge adapters are compatible with certain gauges and machines. They allow a gauge to mate with a specific cylinder, press, or other tool.

TECHNICAL SPECIFICATIONS

Brand: ENERPAC
Compatible Brand and Series: E



PRODUCT DESCRIPTION:

For easy mounting of a pressure gauge into your system
Male end screws into pump or cylinder port, female end accepts hose or coupler, third port is for gauge connection
Simplifies gauge installation and reading



GA45GC, 45 DEGREE ANGLED GAUGE ADAPTOR ASSEMBLY



SKU: E-GA45GC

SPECIFICATIONS:

Model: GA45GC | ECCN: EAR99 | Harmonization: 9026208000
Series: GA45GC | Product Line: Industrial Tools
45° angled gauge improves visibility
Slim and narrow design
Easy to fit in a broad range of systems
Maximize controlled load movement
Glycer

PRODUCT DESCRIPTION:

Model: GA45GC | ECCN: EAR99 | Harmonization: 9026208000
Series: GA45GC | Product Line: Industrial Tools
45° angled gauge improves visibility
Slim and narrow design
Easy to fit in a broad range of systems
Maximize controlled load movement
Glycer



GF835P, HYDRAULIC FORCE AND PRESSURE GAUGE, IMPERIAL SCALE, FOR USE WITH 25 AND 50 TON CYLINDERS



SKU: E-GF835P

SPECIFICATIONS:

GF-Series gauges are calibrated with dual scales for reading for pressure and force.
The force readings allow you to measure external loads, such as those supported by a cylinder or jack, or the force used for pressing parts.
The glycerin within the ga

PRODUCT DESCRIPTION:

Maximum Operating Pressure (psi)
10,000
Style
Glycerine Filled
Face Diameter (in)
4
Accuracy Percentage of Full Scale
1
Force (imperial tons)



H9206Q, 6 FT., HEAVY-DUTY RUBBER HIGH PRESSURE HYDRAULIC HOSE, .25 IN. INTERNAL DIAMETER

SKU: E-H9206Q



SPECIFICATIONS:

H900-Series Hydraulic Hoses are designed to comply with the Material Handling Institute IJ100 hose specification. They provide the durability needed for repeated heavy-duty high-pressure applications and offer the optimum combination of flexibility and lo

PRODUCT DESCRIPTION:

- Maximum Operating Pressure (psi)
10,000
- Internal Diameter (in)
0.25
- End One Coupler
1/4" NPTF
- End Two Coupler
1/4" NPTF
- Oil Capacity (in3)



50 FT., HEAVY-DUTY RUBBER HIGH PRESSURE HYDRAULIC HOSE, .38 IN. INTERNAL DIAMETER

SKU: E-H9350



SPECIFICATIONS:

- Maximum Operating Pressure (psi)
10,000
- Internal Diameter (in)
0.38
- End One Coupler
3/8" NPTF
- End Two Coupler
3/8" NPTF
- Oil Capacity (in3)
68.04
- Hose Oil Capacity (in3)
When using long hose lengths, it is sometimes necessary to fill the pump re

PRODUCT DESCRIPTION:

H900-Series Hydraulic Hoses are designed to comply with the Material Handling Institute IJ100 hose specification. They provide the durability needed for repeated heavy-duty high-pressure applications and offer the optimum combination of flexibility and lo



6FT., THERMO-PLASTIC HIGH PRESSURE HYDRAULIC HOSE, .25 IN. INTERNAL DIAMETER

SKU: E-HC7206

SPECIFICATIONS:

Maximum Operating Pressure (psi)
10,000
Internal Diameter (in)
0.25
End One Coupler
3/8" NPTF
End Two Coupler
CH604
Oil Capacity (in3)
3.54
Hose Oil Capacity (in3)
When using long hose lengths, it is sometimes necessary to fill the pump reservoir



PRODUCT DESCRIPTION:

H700-Series Hoses have a safety factor of 4:1 to provide the reassurance and reliability needed for demanding high-pressure applications. Each hose contains two layers of steel wire braids covered by a polyurethane sleeve - providing the strength and ab



10FT., THERMO-PLASTIC HIGH PRESSURE HYDRAULIC HOSE, .25 IN. INTERNAL DIAMETER

SKU: E-HC7210

SPECIFICATIONS:

Maximum Operating Pressure (psi)
10,000
Internal Diameter (in)
0.25
End One Coupler
3/8" NPTF
End Two Coupler
CH604
Oil Capacity (in3)
5.89
Hose Oil Capacity (in3)
When using long hose lengths, it is sometimes necessary to fill the pump reservoir



PRODUCT DESCRIPTION:

H700-Series Hoses have a safety factor of 4:1 to provide the reassurance and reliability needed for demanding high-pressure applications. Each hose contains two layers of steel wire braids covered by a polyurethane sleeve - providing the strength and ab



62 TON CAPACITY, 1.97 IN STROKE, SINGLE-ACTING, HIGH TONNAGE, LOCK NUT HYDRAULIC CYLINDER



SKU: E-HCL502

SPECIFICATIONS:

- Maximum Operating Pressure (psi)
10,000
- Capacity Class (tonnage)
50
- Maximum Cylinder Capacity Advance (short tons)
62
- Stroke (in)
1.97
- Collapsed Height A (in)
6.46
- Extended Height B (in)
8.43
- Return Type
Single-Acting, Load Return
- Plunger Ty

PRODUCT DESCRIPTION:

HCL Series High Tonnage Hydraulic Cylinders feature a lock nut to provide secure mechanical load holding for extended periods. These single-acting load return cylinders contain fewer parts than other types making them simple to use and maintain.

All Enerp



1 GALLON, HF HYDRAULIC OIL FOR POWERED PUMPS



SKU: E-HF101

SPECIFICATIONS:

The Enerpac HF-series Hydraulic Oil is specially formulated for powered hydraulic pumps. The HF-series oil contains anti-sludge, anti-rust, and anti-foam additives for overall superior performance. The HF-series hydraulic oil prevents cavitation and offer

PRODUCT DESCRIPTION:

- Contents (Gal)
1
- Volume
1 Gallon
- Pump Compatibility
Power Pump
- 32
- API Gravity, ASTM D1298
32



50 TON, H-FRAME HYDRAULIC PRESS WITH RR5013 DOUBLE-ACTING CYLINDER AND ZE4420SBN ELECTRIC PUMP

SKU: E-IPE5060

SPECIFICATIONS:

Maximum Operating Pressure (psi)
10,000
Capacity (imperial tons)
50
Maximum Vertical Daylight (in)
48.56
Maximum Bed Width (in)
28.75
Power Source Type
Electric
Power Source Valve
Electric
Pump Model Number
ZE4420SBN
Cylinder Model Number
R

PRODUCT DESCRIPTION:

Model: IPE5060 | ECCN: EAR99 | Harmonization: 8479899599
Series: IP | Product Line: Industrial Tools
Quality welded frame for maximum strength and long life
Exclusive "Hydra-Lift," bed for effortless adjustment of the vertical daylight (10-



25 TON, H-FRAME HYDRAULIC PRESS WITH RC2514 SINGLE-ACTING CYLINDER AND P80 HAND PUMP

SKU: E-IPH2531

SPECIFICATIONS:

Maximum Operating Pressure (psi)
10,000
Capacity (imperial tons)
25
Maximum Vertical Daylight (in)
54.5
Maximum Bed Width (in)
29
Power Source Type
Manual
Power Source Valve
Manual
Pump Model Number
P80
Cylinder Model Number
RC2514
Cylinde

PRODUCT DESCRIPTION:

Model: IPH2531 | ECCN: EAR99 | Harmonization: 8479899599
Series: IP | Product Line: Industrial Tools
Quality welded frame for maximum strength and long life
Exclusive "Hydra-Lift," bed for effortless adjustment of the vertical daylight (10-



LGHS314H, 14 TON, 3 JAW, HYDRAULIC LOCK-GRIP PULLER SET WITH HAND PUMP

SKU: E-LGHS314H

SPECIFICATIONS:

Series: LGHS | Product Line: Industrial Tools

LGH-Series Pullers provide the same safety and ease of use as their mechanical counterparts, with the pulling force applied by a standard 10,150 psi hydraulic cylinder.

Quickly and easily mount on a wide



PRODUCT DESCRIPTION:

Maximum Operating Pressure (psi)
10,150

Capacity (imperial tons)
14

Pump Power Source
Hand Pump

Puller Power Source
Hydraulic

Maximum Spread (in)



16 TON, VERTICAL LIFTING WEDGE, 0.83 IN LIFTING HEIGHT

SKU: E-LW16

SPECIFICATIONS:

Maximum Operating Pressure (psi)
10,000

Maximum Spread (in)
0.83

Power Source
Hydraulic

Maximum Lifting Force (ton)
16

Maximum Lifting Force (imperial tons)
16

Spreading Force (imperial tons)
16

Capacity (imperial tons)
16

Capacity (kN)
157



PRODUCT DESCRIPTION:

Choose the LW-Series Vertical Lifting Wedge when you need to lift and lower heavy loads of up to 16-tons with a stable motion without slippage. A minimum insertion gap of 0.39" (10 mm) is needed which expands up to 2.02" (51.5 mm). Retraction force is sup



**15 TON CAPACITY, HYDRAULIC NUT CUTTER,
HEXAGON UP TO 1.13 IN**

SKU: E-NC2432

SPECIFICATIONS:

Maximum Operating Pressure (psi)
10,000
Capacity (imperial tons)
15
Cutter Head Return Type
Single-Acting, Spring Return
Hexagon Nut Range (in)
.94 - 1.13
Bolt Range (in)
.63 - .88
Maximum Material Hardness
HRC 44
Oil Capacity (in3)
3.66
Rep



PRODUCT DESCRIPTION:

Model: NC2432 | ECCN: EAR99 | Harmonization: 8479899599
Series: NC | Product Line: Industrial Tools, Bolting Tools
Compact and ergonomic design, easy to use
Unique angled head allows flush access
Single-acting, spring return cylinder
Heav



**20 TON CAPACITY, HYDRAULIC NUT CUTTER,
HEXAGON UP TO 1.56 IN**

SKU: E-NC3241

SPECIFICATIONS:

Maximum Operating Pressure (psi)
10,000
Capacity (imperial tons)
20
Cutter Head Return Type
Single-Acting, Spring Return
Hexagon Nut Range (in)
1.13 - 1.56
Bolt Range (in)
.88 - 1.13
Maximum Material Hardness
HRC 44
Oil Capacity (in3)
4.88
R



PRODUCT DESCRIPTION:

Model: NC3241 | ECCN: EAR99 | Harmonization: 8479899599
Series: NC | Product Line: Industrial Tools, Bolting Tools
Compact and ergonomic design, easy to use
Unique angled head allows flush access
Single-acting, spring return cylinder
Heav



NCB2432, NC2432 NUT CUTTER CHISEL REPLACEMENT

SKU: E-NCB2432

SPECIFICATIONS:

PRODUCT DESCRIPTION

The Enerpac NCB2432 is a replacement chisel for NC2432 nut cutter.

TECHNICAL SPECIFICATIONS

Product Weight: 0.15 LBS

Shipping Weight: 1lb



PRODUCT DESCRIPTION:

Used for NC2432 nut cutter
Replacement chisel
Maximum material hardness: HRC 44



P141K2, REPAIR KIT

SKU: E-P141K2

SPECIFICATIONS:

PRODUCT DESCRIPTION

Enerpac P141K2 - Repair Kit for Lightweight Hand Pumps

TECHNICAL SPECIFICATIONS

Manufacturer Part Number: P141K2

Manufacturer: Enerpac Tool Group

Brand Name: ENERPAC®

Package Quantity: 1/Each

Item Weight: 0.13lbs

Shipping Weight: 1lb



PRODUCT DESCRIPTION:

Repair kit
Used for lightweight hand pumps



P142, TWO SPEED, LIGHTWEIGHT HYDRAULIC HAND PUMP, 20 IN3 USABLE OIL

SKU: E-P142

SPECIFICATIONS:

Enerpac lightweight hydraulic hand pumps are a convenient alternative to heavier steel pumps without any sacrifice in performance or safety. Each model is rated up to 10,000 psi (700 bar).

The durable glass-filled nylon reservoir and nylon encapsulated a



PRODUCT DESCRIPTION:

Maximum Operating Pressure (psi)
10,000
Pressure Rating (psi) 1st Stage
200
Pressure Rating (psi) 2nd Stage
10,000
Cylinder Compatability
Single-acting
Pump Type



P181190W, RELIEF VALVE

SKU: E-P181190W

SPECIFICATIONS:

PRODUCT DESCRIPTION

Double-Acting Long-Stroke Cylinders (RR-Series and equivalent)

TECHNICAL SPECIFICATIONS

Brand: Enerpac
Pack Size: 1.00
UOM: EA
Supplier Part Number: P181190W
Item Weight: 0.99 lbs
Shipping Weight: 1lb



PRODUCT DESCRIPTION:

Relief Valve
Double-Acting Long-Stroke Cylinders







P202, TWO SPEED, LIGHTWEIGHT HYDRAULIC HAND PUMP, 55 IN3 USABLE OIL

SKU: E-P202

SPECIFICATIONS:

Maximum Operating Pressure (psi)
10,000
Pressure Rating (psi) 1st Stage
200
Pressure Rating (psi) 2nd Stage
10,000
Cylinder Compatability
Single-acting
Pump Type
Two Speed
Reservoir Capacity (in3)
55
Usable Oil Capacity (in3)
55
Maximum Flow at Rated Pres



PRODUCT DESCRIPTION:

Enerpac lightweight hydraulic hand pumps are a convenient alternative to heavier steel pumps without any sacrifice in performance or safety. Each model is rated up to 10,000 psi (700 bar).

The durable glass-filled nylon reservoir and nylon encapsulated a



TWO SPEED, ULTRA-HIGH PRESSURE HYDRAULIC HAND PUMP, 60 IN3 USABLE OIL, 40,000 PSI

SKU: E-P2282

SPECIFICATIONS:

Maximum Operating Pressure (psi)
40,000
Pressure Rating (psi) 1st Stage
200
Pressure Rating (psi) 2nd Stage
40,000
Cylinder Compatability
Single-acting
Reservoir Capacity (in3)
60
Usable Oil Capacity (in3)
60
Maximum Flow at Rated Pressure
.0



PRODUCT DESCRIPTION:

Model: P2282 | ECCN: EAR99 | Harmonization: 8413200000

Series: P | Product Line: Industrial Tools
Enerpac ultra-high-pressure, hydraulic hand pumps are offered as single-stage or 2 stage manual pumps that can handle up to 40,000 psi (2800 ba



SINGLE SPEED, ULTIMA STEEL HYDRAULIC HAND PUMP, 41 IN3 USABLE OIL



SKU: E-P39

SPECIFICATIONS:

Maximum Operating Pressure (psi)
10,000
Pressure Rating (psi) 1st Stage
10,000
Pressure Rating (psi) 2nd Stage
-
Cylinder Compatability
Single-acting
Pump Type
Single Speed
Reservoir Capacity (in3)
41
Usable Oil Capacity (in3)
41
Maximum Flo

PRODUCT DESCRIPTION:

Model: P39 | ECCN: EAR99 | Harmonization: 8413200000
Series: P | Product Line: Industrial Tools
Ultima Steel Hand Pumps are durable, portable, and highly efficient. Each model in the series features an all-steel construction, a chrome plated



TWO SPEED, LIGHTWEIGHT HYDRAULIC HAND PUMP



SKU: E-P392

SPECIFICATIONS:

Maximum Operating Pressure (psi)
10,000
Pressure Rating (psi) 1st Stage
200
Pressure Rating (psi) 2nd Stage
10,000
Cylinder Compatability
Single-acting
Pump Type
Two Speed
Reservoir Capacity (in3)
55
Usable Oil Capacity (in3)
55
Maximum Flow

PRODUCT DESCRIPTION:

Enerpac lightweight hydraulic hand pumps are a convenient alternative to heavier steel pumps without any sacrifice in performance or safety. Each model is rated up to 10,000 psi (700 bar). The durable glass-filled nylon reservoir and nylon encapsulated al



P39K4, REPAIR PARTS KIT

SKU: E-P39K4

SPECIFICATIONS:

PRODUCT DESCRIPTION

Repair Kit P39, ULTIMA Steel Hand Pump, ENERPAC (P39K4)

TECHNICAL SPECIFICATIONS

Brand: ENERPAC

For Use With Grainger Item Number: 4Z480

For Use With Mfr. Model Number: P-39

Includes: Balls; Gaskets; O-Rings; Retaining Rings and Pins;



PRODUCT DESCRIPTION:

Repair kit for hydraulic hand pumps, ideal for use with Grainger 4Z480 and Enerpac P-39 hydraulic pumps

Includes balls, washers, O-rings, gaskets, retaining rings and pins



TWO SPEED, ULTIMA STEEL HYDRAULIC HAND PUMP

SKU: E-P462

SPECIFICATIONS:

Maximum Operating Pressure (psi)

10,000

Pressure Rating (psi) 1st Stage

200

Pressure Rating (psi) 2nd Stage

10,000

Cylinder Compatability

Single-acting

Pump Type

Two Speed

Reservoir Capacity (in3)

453

Usable Oil Capacity (in3)

453

Maximum F



PRODUCT DESCRIPTION:

Model: P462 | ECCN: EAR99 | Harmonization: 8413200000

Series: P | Product Line: Industrial Tools

Reduced handle effort and ergonomic grip for less operator fatigue

Vent free reservoir eliminates spills

Quick grip handle allows for easy tra



PRODUCT DESCRIPTION:

Ultima Steel Hand Pumps are durable, portable, and highly efficient. Each model in the series features an all-steel construction, a chrome plated plunger, and a wiper system for long-lasting performance.

All except the P39 are 2 stage pumps, which reduces



TWO SPEED, ULTIMA STEEL HYDRAULIC HAND PUMP, 453 IN3 USABLE OIL, FOR USE WITH DOUBLE-ACTING CYLINDERS

SKU: E-P464

SPECIFICATIONS:

Maximum Operating Pressure (psi)
10,000
Pressure Rating (psi) 1st Stage
200
Pressure Rating (psi) 2nd Stage
10,000
Cylinder Compatability
Double-acting
Pump Type
Two Speed
Reservoir Capacity (in3)
453
Usable Oil Capacity (in3)
453
Maximum FI



PRODUCT DESCRIPTION:

Ultima Steel Hand Pumps are durable, portable, and highly efficient. Each model in the series features an all-steel construction, a chrome plated plunger, and a wiper system for long-lasting performance.

All except the P39 are 2 stage pumps, which reduces



TWO SPEED, ULTIMA STEEL HYDRAULIC HAND PUMP, 134 IN3 USABLE OIL

SKU: E-P80

SPECIFICATIONS:

Maximum Operating Pressure (psi)
10,000
Pressure Rating (psi) 1st Stage
500
Pressure Rating (psi) 2nd Stage
10,000
Cylinder Compatability
Single-acting
Pump Type
Two Speed
Reservoir Capacity (in3)
134
Usable Oil Capacity (in3)
134
Maximum FI



TWO SPEED, ULTIMA STEEL HYDRAULIC HAND PUMP P801



SKU: E-P801

SPECIFICATIONS:

- Maximum Operating Pressure (psi) 10,000
- Pressure Rating (psi) 1st Stage 500
- Pressure Rating (psi) 2nd Stage 10,000
- Cylinder Compatability Single-acting
- Pump Type Two Speed
- Reservoir Capacity (in3) 250
- Usable Oil Capacity (in3) 250
- Maximum FI

PRODUCT DESCRIPTION:

Ultima Steel Hand Pumps are durable, portable, and highly efficient. Each model in the series features an all-steel construction, a chrome plated plunger, and a wiper system for long-lasting performance.

All except the P39 are 2 stage pumps, which reduces



P80K8, REPAIR KIT, P80, ULTIMA



SKU: E-P80K8

SPECIFICATIONS:

- Model: P80K8 | ECCN: EAR99 | Harmonization: 8484900000
- Series: | Product Line: Industrial Tools Steel Hand Pumps

PRODUCT DESCRIPTION:

Model: P80K8 | ECCN: EAR99 | Harmonization: 8484900000

Series: | Product Line: Industrial Tools Steel Hand Pumps



P84, TWO SPEED, ULTIMA STEEL HYDRAULIC HAND PUMP, 134 IN3 USABLE OIL, FOR USE WITH DOUBLE-ACTING CYLINDERS

SKU: E-P84



SPECIFICATIONS:

Ultima Steel Hand Pumps are durable, portable, and highly efficient. Each model in the series features an all-steel construction, a chrome plated plunger, and a wiper system for long-lasting performance.

All except the P39 are 2 stage pumps, which reduce

PRODUCT DESCRIPTION:

Maximum Operating Pressure (psi)
10,000
Pressure Rating (psi) 1st Stage
500
Pressure Rating (psi) 2nd Stage
10,000
Cylinder Compatability
Double-acting
Pump Type



P84VRK, ULTIMA P84 VALVE REPAIR KIT

SKU: E-P84VRK



SPECIFICATIONS:

Model: P84VRK | Series: | Product Line: Industrial Tools
Steel Hand Pumps

PRODUCT DESCRIPTION:

Model: P84VRK | Series: | Product Line: Industrial Tools
Steel Hand Pumps



PATG1102N, TURBO II AIR HYDRAULIC PUMP, HAND/ FOOT OPERATED 3/3 TREADLE VALVE, 127 IN3 USABLE OIL, FOR USE WITH SINGLE-ACTING

SKU: E-PAT1102N



SPECIFICATIONS:

Model: PATG1102N | ECCN: EAR99 | Harmonization: 8413500080
Series: PATG | Product Line: Industrial Tools
Enerpac Turbo II Air Over Hydraulic Pumps generate the hydraulic pressure you need using the air pressure you have available. The Air Sav

PRODUCT DESCRIPTION:

Maximum Operating Pressure (psi)
10,000
Cylinder Compatability
Single-acting
Reservoir Capacity (in3)
127
Maximum Flow at Rated Pressure
10 in3/min
Output Flow Rate (in3/min) No Load



ENERPAC REPAIR KIT: FOR PARG SERIES/PATG SERIES

SKU: E-PATG110K



SPECIFICATIONS:

INCLUDES
(1) B1908503 O-Ring,
(1) DC4027167 2 L Reservoir Gasket
(1) DC7231037 5 L Foam Reservoir Gasket

PRODUCT DESCRIPTION

Enerpac® Repair Kit, For Use With: 1500-P, 15020-P and 15040-P Air-Hydraulic Pump, Includes: (1) B1908503 O-Ring, (1) DC4027167

PRODUCT DESCRIPTION:

Complete Kit
Used for Turbo II Air Hydraulic Pumps



TWO SPEED, PORTABLE ELECTRIC TORQUE WRENCH PUMP WITH HEAT EXCHANGER, .5 GALLON USABLE OIL, 115V, FOR USE WITH SQD & HXD

SKU: E-PMU10427

SPECIFICATIONS:

Maximum Operating Pressure (psi)
10,000
Pressure Rating (psi) 1st Stage
700
Pressure Rating (psi) 2nd Stage
10000
For Use With Torque Wrenches
SQD251, SDQ501, HXD30, HXD60
Reservoir Capacity (in3)
116
Usable Oil Capacity (gal)
0.5
Maximum Flow

PRODUCT DESCRIPTION:

Powerful two-speed pump is lightweight and easy to carry
Standard heat exchanger package keeps pump cool under extreme use
Glycerin filled gauge with scales reading in psi and bar
Transparent overlays in Ft.lbs and Nm for all En-erpactorque wrenches pro



PUJ1201B, TWO SPEED, ECONOMY ELECTRIC HYDRAULIC PUMP, 3/2 MANUAL VALVE, 115V, FOR USE WITH SINGLE-ACTING CYLINDERS

SKU: E-PUJ1201B

SPECIFICATIONS:

PU Series electric over hydraulic pumps combine economy with high-performance - ideal for intermittent use when working with small to medium size cylinders and other hydraulic tools.
All models in the series are 2-speed for enhanced productivity, and each

PRODUCT DESCRIPTION:

Maximum Operating Pressure (psi)
10,000
Pressure Rating (psi) 1st Stage
200
Pressure Rating (psi) 2nd Stage
10,000
Cylinder Compatability
Single-acting
Reservoir Capacity (in3)



PRODUCT DESCRIPTION:

PU Series electric over hydraulic pumps combine economy with high-performance - ideal for intermittent use when working with small to medium size cylinders and other hydraulic tools. All models in the series are 2-speed for enhanced productivity, and each



TWO SPEED, ECONOMY ELECTRIC HYDRAULIC PUMP, 4/3 MANUAL VALVE, 115V, FOR USE WITH DOUBLE-ACTING CYLINDERS

SKU: E-PUJ1401B

SPECIFICATIONS:

Maximum Operating Pressure (psi)
10,000
Pressure Rating (psi) 1st Stage
200
Pressure Rating (psi) 2nd Stage
10,000
Cylinder Compatability
Double-acting
Reservoir Capacity (in3)
231
Usable Oil Capacity (gal)
1
Maximum Flow at Rated Pressure
20



PRODUCT DESCRIPTION:

RC-TRIO is the next generation of the legendary Enerpac RC-Series single acting hydraulic cylinders. These hydraulic jacks include many advanced features to ensure superior durability, versatility, and productivity. A pre-tensioned spring provides fast



103.1 TON CAPACITY, 6.63 IN STROKE, GENERAL PURPOSE HYDRAULIC CYLINDER

SKU: E-RC1006

SPECIFICATIONS:

Maximum Operating Pressure (psi)
10,000
Capacity Class (tonnage)
100
Maximum Cylinder Capacity Advance (short tons)
103.1
Stroke (in)
6.63
Collapsed Height A (in)
14.06
Extended Height B (in)
20.69
Return Type
Single-Acting, Spring Return
PI



PRODUCT DESCRIPTION:

RC-TRIO is the next generation of the legendary Enerpac RC-Series single acting hydraulic cylinders. These hydraulic jacks include many advanced features to ensure superior durability, versatility, and productivity. A pre-tensioned spring provides fast



11.2 TON CAPACITY, 1.00 IN STROKE, GENERAL PURPOSE HYDRAULIC CYLINDER

SKU: E-RC101

SPECIFICATIONS:

Maximum Operating Pressure (psi)
10,000
Capacity Class (tonnage)
10
Maximum Cylinder Capacity Advance (short tons)
11.2
Stroke (in)
1
Collapsed Height A (in)
3.53
Extended Height B (in)
4.53
Return Type
Single-Acting, Spring Return
Plunger T



PRODUCT DESCRIPTION:

Maximum Operating Pressure (psi)
10,000
Capacity Class (tonnage)
10
Maximum Cylinder Capacity Advance (short tons)
11.2
Stroke (in)
4.13
Collapsed Height A (in)



RC104, 11.2 TON CAPACITY, 4.13 IN STROKE, GENERAL PURPOSE HYDRAULIC CYLINDER

SKU: E-RC104

SPECIFICATIONS:

Model: RC104 | ECCN: EAR99 | Harmonization: 8412210075
Series: RC | Product Line: Industrial Tools
RC-TRIO is the next generation of the legendary Enerpac RC-Series single acting hydraulic cylinders. These hydraulic jacks include many advance



PRODUCT DESCRIPTION:

RC-TRIO is the next generation of the legendary Enerpac RC-Series single acting hydraulic cylinders. These hydraulic jacks include many advanced features to ensure superior durability, versatility, and productivity. A pre-tensioned spring provides fast



11.2 TON CAPACITY, 6.13 IN STROKE, GENERAL PURPOSE HYDRAULIC CYLINDER

SKU: E-RC106

SPECIFICATIONS:

Maximum Operating Pressure (psi)
10,000
Capacity Class (tonnage)
10
Maximum Cylinder Capacity Advance (short tons)
11.2
Stroke (in)
6.13
Collapsed Height A (in)
9.75
Extended Height B (in)
15.88
Return Type
Single-Acting, Spring Return
Plung



PRODUCT DESCRIPTION:

RC-TRIO is the next generation of the legendary Enerpac RC-Series single acting hydraulic cylinders. These hydraulic jacks include many advanced features to ensure superior durability, versatility, and productivity. A pre-tensioned spring provides fast



15.7 TON CAPACITY, 6.00 IN STROKE, GENERAL PURPOSE HYDRAULIC CYLINDER

SKU: E-RC156

SPECIFICATIONS:

Maximum Operating Pressure (psi)
10,000
Capacity Class (tonnage)
15
Maximum Cylinder Capacity Advance (short tons)
15.7
Stroke (in)
6
Collapsed Height A (in)
10.69
Extended Height B (in)
16.69
Return Type
Single-Acting, Spring Return
Plunger



PRODUCT DESCRIPTION:

RC-TRIO is the next generation of the legendary Enerpac RC-Series single acting hydraulic cylinders. These hydraulic jacks include many advanced features to ensure superior durability, versatility, and productivity. A pre-tensioned spring provides fast



15.7 TON CAPACITY, 8.00 IN STROKE, GENERAL PURPOSE HYDRAULIC CYLINDER

SKU: E-RC158

SPECIFICATIONS:

Maximum Operating Pressure (psi)
10,000
Capacity Class (tonnage)
15
Maximum Cylinder Capacity Advance (short tons)
15.7
Stroke (in)
8
Collapsed Height A (in)
12.69
Extended Height B (in)
20.69
Return Type
Single-Acting, Spring Return
Plunger



PRODUCT DESCRIPTION:

RC-TRIO is the next generation of the legendary Enerpac RC-Series single acting hydraulic cylinders. These hydraulic jacks include many advanced features to ensure superior durability, versatility, and productivity. A pre-tensioned spring provides fast



25.8 TON CAPACITY, 10.25 IN STROKE, GENERAL PURPOSE HYDRAULIC CYLINDER

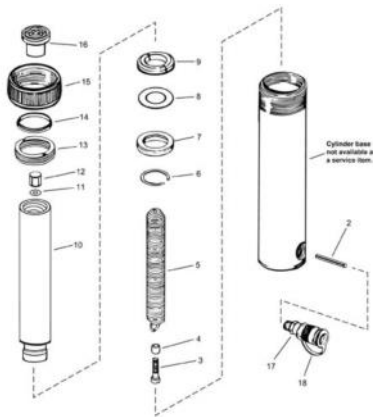
SKU: E-RC2510

SPECIFICATIONS:

Maximum Operating Pressure (psi)
10,000
Capacity Class (tonnage)
25
Maximum Cylinder Capacity Advance (short tons)
25.8
Stroke (in)
10.25
Collapsed Height A (in)
14.75
Extended Height B (in)
25
Return Type
Single-Acting, Spring Return
Plunge



RC2510K REPAIR KIT FOR RC25 SERIES ENERPAC HYDRAULIC CYLINDERS



SKU: E-RC2510K

SPECIFICATIONS:

PRODUCT DESCRIPTION

The RC2510K repair kit from Enerpac includes all the components for a basic repair for 25 ton RC series cylinders. Please see the attached pdf repair sheets for additional components not included in this repair kit.

TECHNICAL SPECIFICA

PRODUCT DESCRIPTION:

Enerpac RC2510K - Kit for Single Acting Cylinder-
The Enerpac RC2510K is a kit for the single-acting cylinders (RC-series and equivalent).



25.8 TON CAPACITY, 14.25 IN STROKE, GENERAL PURPOSE HYDRAULIC CYLINDER



SKU: E-RC2514

SPECIFICATIONS:

- Maximum Operating Pressure (psi)
10,000
- Capacity Class (tonnage)
25
- Maximum Cylinder Capacity Advance (short tons)
25.8
- Stroke (in)
14.25
- Collapsed Height A (in)
18.75
- Extended Height B (in)
33
- Return Type
Single-Acting, Spring Return
Plunge

PRODUCT DESCRIPTION:

Model: RC2514 | ECCN: EAR99 | Harmonization: 8412210075

Series: RC | Product Line: Industrial Tools
RC-TRIO is the next generation of the legendary Enerpac RC-Series single acting hydraulic cylinders. These hydraulic jacks include many advan



RC252, 25.8 TON CAPACITY, 2.00 IN STROKE, GENERAL PURPOSE HYDRAULIC CYLINDER

SKU: E-RC252

SPECIFICATIONS:

Model: RC252 | ECCN: EAR99 | Harmonization: 8412210075
Series: RC | Product Line: Industrial Tools
RC-TRIO is the next generation of the legendary Enerpac RC-Series single acting hydraulic cylinders. These hydraulic jacks include many advance



PRODUCT DESCRIPTION:

Maximum Operating Pressure (psi)
10,000
Capacity Class (tonnage)
25
Maximum Cylinder Capacity Advance (short tons)
25.8
Stroke (in)
2
Collapsed Height A (in)



RC254, 25.8 TON CAPACITY, 4.00 IN STROKE, GENERAL PURPOSE HYDRAULIC CYLINDER

SKU: E-RC254

SPECIFICATIONS:

Model: RC254 | ECCN: EAR99 | Harmonization: 8412210075
Series: RC | Product Line: Industrial Tools
RC-TRIO is the next generation of the legendary Enerpac RC-Series single acting hydraulic cylinders. These hydraulic jacks include many advance



PRODUCT DESCRIPTION:

Maximum Operating Pressure (psi)
10,000
Capacity Class (tonnage)
25
Maximum Cylinder Capacity Advance (short tons)
25.8
Stroke (in)
4
Collapsed Height A (in)



RC50, 4.9 TON CAPACITY, .63 IN STROKE, GENERAL PURPOSE HYDRAULIC CYLINDER

SKU: E-RC50

SPECIFICATIONS:

Model: RC50 | ECCN: EAR99 | Harmonization: 8412210075
Series: RC | Product Line: Industrial Tools
RC-TRIO is the next generation of the legendary Enerpac RC-Series single acting hydraulic cylinders. These hydraulic jacks include many advanced



PRODUCT DESCRIPTION:

Maximum Operating Pressure (psi)
10,000
Capacity Class (tonnage)
5
Maximum Cylinder Capacity Advance (short tons)
4.9
Stroke (in)
0.63
Collapsed Height A (in)



55.2 TON CAPACITY, 13.25 IN STROKE, GENERAL PURPOSE HYDRAULIC CYLINDER

SKU: E-RC5013

SPECIFICATIONS:

Maximum Operating Pressure (psi)
10,000
Capacity Class (tonnage)
50
Maximum Cylinder Capacity Advance (short tons)
55.2
Stroke (in)
13.25
Collapsed Height A (in)
18.13
Extended Height B (in)
31.38
Return Type
Single-Acting, Spring Return
Plu



PRODUCT DESCRIPTION:

RC-TRIO is the next generation of the legendary Enerpac RC-Series single acting hydraulic cylinders. These hydraulic jacks include many advanced features to ensure superior durability, versatility, and productivity.
A pre-tensioned spring provides fast



55.2 TON CAPACITY, 2.00 IN STROKE, GENERAL PURPOSE HYDRAULIC CYLINDER

SKU: E-RC502

SPECIFICATIONS:

RC-TRIO is the next generation of the legendary Enerpac RC-Series single acting hydraulic cylinders. These hydraulic jacks include many advanced features to ensure superior durability, versatility, and productivity.

A pre-tensioned spring provides fast



PRODUCT DESCRIPTION:

Maximum Operating Pressure (psi)
10,000
Capacity Class (tonnage)
50
Maximum Cylinder Capacity Advance (short tons)
55.2
Stroke (in)
2
Collapsed Height A (in)



55.2 TON CAPACITY, 4.00 IN STROKE, GENERAL PURPOSE HYDRAULIC CYLINDER

SKU: E-RC504

SPECIFICATIONS:

Maximum Operating Pressure (psi)
10,000
Capacity Class (tonnage)
50
Maximum Cylinder Capacity Advance (short tons)
55.2
Stroke (in)
4
Collapsed Height A (in)
8.94
Extended Height B (in)
12.94
Return Type
Single-Acting, Spring Return
Plunger



PRODUCT DESCRIPTION:

Model: RC504 | ECCN: EAR99 | Harmonization: 8412210075
Series: RC | Product Line: Industrial Tools
RC-TRIO is the next generation of the legendary Enerpac RC-Series single acting hydraulic cylinders. These hydraulic jacks include many advanc



55.2 TON CAPACITY, 6.25 IN STROKE, GENERAL PURPOSE HYDRAULIC CYLINDER



SKU: E-RC506

SPECIFICATIONS:

Maximum Operating Pressure (psi)
10,000
Capacity Class (tonnage)
50
Maximum Cylinder Capacity Advance (short tons)
55.2
Stroke (in)
6.25
Collapsed Height A (in)
11.13
Extended Height B (in)
17.38
Return Type
Single-Acting, Spring Return
Plun

PRODUCT DESCRIPTION:

RC-TRIO is the next generation of the legendary Enerpac RC-Series single acting hydraulic cylinders. These hydraulic jacks include many advanced features to ensure superior durability, versatility, and productivity. A pre-tensioned spring provides fast



4.9 TON CAPACITY, 7.00 IN STROKE, GENERAL PURPOSE HYDRAULIC CYLINDER



SKU: E-RC57

SPECIFICATIONS:

Maximum Operating Pressure (psi)
10,000
Capacity Class (tonnage)
5
Maximum Cylinder Capacity Advance (short tons)
4.9
Stroke (in)
7
Collapsed Height A (in)
10.75
Extended Height B (in)
17.75
Return Type
Single-Acting, Spring Return
Plunger T

PRODUCT DESCRIPTION:

Model: RC57 | ECCN: EAR99 | Harmonization: 8412210075
Series: RC | Product Line: Industrial Tools
RC-TRIO is the next generation of the legendary Enerpac RC-Series single acting hydraulic cylinders. These hydraulic jacks include many advance



PRODUCT DESCRIPTION:

Model: RC756 | ECCN: EAR99 | Harmonization: 8412210075
Series: RC | Product Line: Industrial Tools
RC-TRIO is the next generation of the legendary Enerpac RC-Series single acting hydraulic cylinders. These hydraulic jacks include many advanc



79.5 TON CAPACITY, 6.13 IN STROKE, GENERAL PURPOSE HYDRAULIC CYLINDER

SKU: E-RC756

SPECIFICATIONS:

Maximum Operating Pressure (psi)
10,000
Capacity Class (tonnage)
75
Maximum Cylinder Capacity Advance (short tons)
79.5
Stroke (in)
6.13
Collapsed Height A (in)
11.25
Extended Height B (in)
17.38
Return Type
Single-Acting, Spring Return
Plun



103.1 TON CAPACITY, 3.00 IN STROKE, SINGLE-ACTING, HOLLOW PLUNGER HYDRAULIC CYLINDER

SKU: E-RCH1003

SPECIFICATIONS:

Maximum Operating Pressure (psi)
10,000
Capacity Class (tonnage)
100
Maximum Cylinder Capacity Advance (short tons)
103.1
Stroke (in)
3
Collapsed Height A (in)
10
Extended Height B (in)
13
Return Type
Single-Acting, Spring Return
Plunger Typ

PRODUCT DESCRIPTION:

RCH-Series Hollow Plunger Cylinders offer versatility in testing, maintenance, and tensioning applications. The hollow plunger design allows for push, pull or lifting applications.?
Enerpac cylinders are built to withstand tough conditions and demanding



RCH1003K, REPAIR KIT

SKU: E-RCH1003K

SPECIFICATIONS:

Single-Acting Hollow Plunger Cylinders (RCH-Series and equivalent)

PRODUCT DESCRIPTION:

Single-Acting Hollow Plunger Cylinders (RCH-Series and equivalent)



13.8 TON CAPACITY, 1.63 IN STROKE, SINGLE-ACTING, HOLLOW PLUNGER HYDRAULIC CYLINDER

SKU: E-RCH1211

SPECIFICATIONS:

Maximum Operating Pressure (psi)
10,000
Capacity Class (tonnage)
12
Maximum Cylinder Capacity Advance (short tons)
13.8
Stroke (in)
1.63
Collapsed Height A (in)
4.75
Extended Height B (in)
6.38
Return Type
Single-Acting, Spring Return
Plunge



PRODUCT DESCRIPTION:

RCH-Series Hollow Plunger Cylinders offer versatility in testing, maintenance, and tensioning applications. The hollow plunger design allows for push, pull or lifting applications. Enerpac cylinders are built to withstand tough conditions and demanding



PRODUCT DESCRIPTION:

RCH-Series Hollow Plunger Cylinders offer versatility in testing, maintenance, and tensioning applications. The hollow plunger design allows for push, pull or lifting applications. Enerpac cylinders are built to withstand tough conditions and demanding



13.8 TON CAPACITY, 3.00 IN STROKE, SINGLE-ACTING, HOLLOW PLUNGER HYDRAULIC CYLINDER

SKU: E-RCH123

SPECIFICATIONS:

Maximum Operating Pressure (psi)
10,000
Capacity Class (tonnage)
12
Maximum Cylinder Capacity Advance (short tons)
13.8
Stroke (in)
3
Collapsed Height A (in)
7.25
Extended Height B (in)
10.25
Return Type
Single-Acting, Spring Return
Plunger



PRODUCT DESCRIPTION:

RCH-Series Hollow Plunger Cylinders offer versatility in testing, maintenance, and tensioning applications. The hollow plunger design allows for push, pull or lifting applications. Enerpac cylinders are built to withstand tough conditions and demanding



23.6 TON CAPACITY, 2.00 IN STROKE, SINGLE-ACTING, HOLLOW PLUNGER HYDRAULIC CYLINDER

SKU: E-RCH202

SPECIFICATIONS:

Maximum Operating Pressure (psi)
10,000
Capacity Class (tonnage)
20
Maximum Cylinder Capacity Advance (short tons)
23.6
Stroke (in)
2
Collapsed Height A (in)
6.38
Extended Height B (in)
8.38
Return Type
Single-Acting, Spring Return
Plunger T







ENERPAC RCH202K REPAIR KIT



SKU: E-RCH202K

SPECIFICATIONS:

PRODUCT DESCRIPTION

RCH202K Repair Kit For RCH 202 Hydraulic Hollow Cylinder

TECHNICAL SPECIFICATIONS

UOM: EA

Description: Repair Kit

Item Weight: 0.03 lbs

Component Type: Service Parts

Tool Type: Industrial/Workholding

Tool Sub-type: Kit

Manufacturer:

PRODUCT DESCRIPTION:

Repair/Service Parts and Compo



RCH206, 23.6 TON CAPACITY, 6.10 IN STROKE, SINGLE-ACTING, HOLLOW PLUNGER HYDRAULIC CYLINDER



SKU: E-RCH206

SPECIFICATIONS:

RCH-Series Hollow Plunger Cylinders offer versatility in testing, maintenance, and tensioning applications. The hollow plunger design allows for push, pull or lifting applications.?

Enerpac cylinders are built to withstand tough conditions and demanding

PRODUCT DESCRIPTION:

Maximum Operating Pressure (psi)

10,000

Capacity Class (tonnage)

20

Maximum Cylinder Capacity Advance (short tons)

23.6

Stroke (in)

6.1

Collapsed Height A (in)



RCH302, 36.1 TON CAPACITY, 2.50 IN STROKE, SINGLE-ACTING, HOLLOW PLUNGER HYDRAULIC CYLINDER

SKU: E-RCH302

SPECIFICATIONS:

Model: RCH302 | ECCN: EAR99 | Harmonization: 8412210075
Series: RCH | Product Line: Industrial Tools
RCH-Series Hollow Plunger Cylinders offer versatility in testing, maintenance, and tensioning applications. The hollow plunger design allows

PRODUCT DESCRIPTION:

Maximum Operating Pressure (psi)
10,000
Capacity Class (tonnage)
30
Maximum Cylinder Capacity Advance (short tons)
36.1
Stroke (in)
2.5
Collapsed Height A (in)



36.1 TON CAPACITY, 6.13 IN STROKE, SINGLE-ACTING, HOLLOW PLUNGER HYDRAULIC CYLINDER

SKU: E-RCH306

SPECIFICATIONS:

Maximum Operating Pressure (psi)
10,000
Capacity Class (tonnage)
30
Maximum Cylinder Capacity Advance (short tons)
36.1
Stroke (in)
6.13
Collapsed Height A (in)
13
Extended Height B (in)
19.13
Return Type
Single-Acting, Spring Return
Plunger

PRODUCT DESCRIPTION:

RCH-Series Hollow Plunger Cylinders offer versatility in testing, maintenance, and tensioning applications. The hollow plunger design allows for push, pull or lifting applications. Enerpac cylinders are built to withstand tough conditions and demanding



PRODUCT DESCRIPTION:

RCH-Series Hollow Plunger Cylinders offer versatility in testing, maintenance, and tensioning applications. The hollow plunger design allows for push, pull or lifting applications. Enerpac cylinders are built to withstand tough conditions and demanding



63.6 TON CAPACITY, 3.00 IN STROKE, SINGLE-ACTING, HOLLOW PLUNGER HYDRAULIC CYLINDER

SKU: E-RCH603

SPECIFICATIONS:

Maximum Operating Pressure (psi)
10,000
Capacity Class (tonnage)
60
Maximum Cylinder Capacity Advance (short tons)
63.6
Stroke (in)
3
Collapsed Height A (in)
9.75
Extended Height B (in)
12.75
Return Type
Single-Acting, Spring Return
Plunger



PRODUCT DESCRIPTION:

Maximum Operating Pressure (psi)
10,000
Capacity Class (tonnage)
60
Maximum Cylinder Capacity Advance (short tons)
63.6
Stroke (in)
6
Collapsed Height A (in)



RCH606, 63.6 TON CAPACITY, 6.00 IN STROKE, SINGLE-ACTING, HOLLOW PLUNGER HYDRAULIC CYLINDER

SKU: E-RCH606

SPECIFICATIONS:

Model: RCH606 | ECCN: EAR99 | Harmonization: 8412210075
Series: RCH | Product Line: Industrial Tools
RCH-Series Hollow Plunger Cylinders offer versatility in testing, maintenance, and tensioning applications. The hollow plunger design allows



98.1 TON CAPACITY, 2.25 IN STROKE, LOW HEIGHT HYDRAULIC CYLINDER



SKU: E-RCS1002

SPECIFICATIONS:

RCS-Series Low Profile Hydraulic Cylinders provide superior durability, performance longevity, safety, and quality in a compact and convenient footprint. These low profile hydraulic jacks are the perfect choice for general lifting and production applicati

PRODUCT DESCRIPTION:

Maximum Operating Pressure (psi)
10,000
Capacity Class (tonnage)
100
Maximum Cylinder Capacity Advance (short tons)
98.1
Stroke (in)
2.25
Collapsed Height A (in)



32.4 TON CAPACITY, 2.44 IN STROKE, LOW HEIGHT HYDRAULIC CYLINDER



SKU: E-RCS302

SPECIFICATIONS:

RCS-Series Low Profile Hydraulic Cylinders provide superior durability, performance longevity, safety, and quality in a compact and convenient footprint. These low profile hydraulic jacks are the perfect choice for general lifting and production applicati

PRODUCT DESCRIPTION:

Maximum Operating Pressure (psi)
10,000
Capacity Class (tonnage)
30
Maximum Cylinder Capacity Advance (short tons)
32.4
Stroke (in)
2.44
Collapsed Height A (in)



RCS302K, REPAIR KIT

SKU: E-RCS302K



SPECIFICATIONS:

TECHNICAL SPECIFICATIONS

UOM: EA
Description: Repair Kit
Weight: N/A
Component Type: Service Parts
Tool Type: Industrial
Tool Sub-type: Kit
Manufacturer: Enerpac
Application: High force tools for all industrial applications.
Manufacturer Part: RCS302K
It

PRODUCT DESCRIPTION:

UOM: EA
: Repair Kit
Weight: N/A
Component Type: Service Parts
Tool Type: Industrial
Tool Sub-type: Kit
Manufacturer: Enerpac
Application: High force tools for all industrial applications.



25 TON CAPACITY, 10.25 IN STROKE, DOUBLE-ACTING, GENERAL PURPOSE HYDRAULIC CYLINDER

SKU: E-RD2510



SPECIFICATIONS:

Maximum Operating Pressure (psi)
10,000
Capacity Class (tonnage)
25
Maximum Cylinder Capacity Advance (short tons)
25
Maximum Cylinder Capacity Retract (short tons)
11
Stroke (in)
10.25
Collapsed Height A (in)
20.69
Extended Height B (in)
30.

PRODUCT DESCRIPTION:

Model: RD2510 | ECCN: EAR99 | Harmonization: 8412210075
Series: RD | Product Line: Industrial Tools, Workholding Tools
Designed for long life, the best choice for production applications
Unique mounting configurations simplify fixturing
Ba



RD2510KV CYLINDER VITON SEAL REPAIR KIT

SKU: E-RD2510KV

SPECIFICATIONS:

PRODUCT DESCRIPTION

The Enerpac RD2510 is a general-purpose hydraulic cylinder with 25 tons of capacity and a 10.25" stroke. Designed for long life, this hydraulic cylinder is the best choice for production applications. Its double-acting operation provid



PRODUCT DESCRIPTION:

Designed for long life, the best choice for production applications
Unique mounting configurations simplify fixturing
Baked enamel finish for increased corrosion resistance
Double-acting operation develops force in both directions, providing maximum versa



103.2 TON CAPACITY, 6.63 IN STROKE, DOUBLE-ACTING, GENERAL PURPOSE HYDRAULIC CYLINDER

SKU: E-RR1006

SPECIFICATIONS:

Maximum Operating Pressure (psi)
10,000
Capacity Class (tonnage)
100
Maximum Cylinder Capacity Advance (short tons)
103.2
Maximum Cylinder Capacity Retract (short tons)
48
Stroke (in)
6.63
Collapsed Height A (in)
14.06
Extended Height B (in)



PRODUCT DESCRIPTION:

withstand high-cycle and demanding job site uses - making them incredibly effective within both the construction and manufacturing industries. RR Cylinders are available in long stroke models to lift or push a load a greater distance, which will save you



PRODUCT DESCRIPTION:

RR-Series Cylinders are the ideal choice whenever you need to retract the plunger quickly with precise control. These popular rams are rugged enough to withstand high-cycle and demanding job site uses - making them incredibly effective within both the con



55.3 TON CAPACITY, 13.13 IN STROKE, DOUBLE-ACTING, GENERAL PURPOSE HYDRAULIC CYLINDER

SKU: E-RR5013

SPECIFICATIONS:

- Maximum Operating Pressure (psi)
10,000
- Capacity Class (tonnage)
50
- Maximum Cylinder Capacity Advance (short tons)
55.3
- Maximum Cylinder Capacity Retract (short tons)
11.8
- Stroke (in)
13.13
- Collapsed Height A (in)
20.06
- Extended Height B (in)



PRODUCT DESCRIPTION:

RR-Series Cylinders are the ideal choice whenever you need to retract the plunger quickly with precise control. These popular rams are rugged enough to withstand high-cycle and demanding job site uses - making them incredibly effective within both the con



55.3 TON CAPACITY, 6.13 IN STROKE, DOUBLE-ACTING, GENERAL PURPOSE HYDRAULIC CYLINDER

SKU: E-RR506

SPECIFICATIONS:

- Maximum Operating Pressure (psi)
10,000
- Capacity Class (tonnage)
50
- Maximum Cylinder Capacity Advance (short tons)
55.3
- Maximum Cylinder Capacity Retract (short tons)
11.8
- Stroke (in)
6.13
- Collapsed Height A (in)
13.06
- Extended Height B (in)



79.6 TON CAPACITY, 6.13 IN STROKE, DOUBLE-ACTING, GENERAL PURPOSE HYDRAULIC CYLINDER

SKU: E-RR756

SPECIFICATIONS:

Maximum Operating Pressure (psi)
10,000
Capacity Class (tonnage)
75
Maximum Cylinder Capacity Advance (short tons)
79.6
Maximum Cylinder Capacity Retract (short tons)
17.6
Stroke (in)
6.13
Collapsed Height A (in)
13.69
Extended Height B (in)

PRODUCT DESCRIPTION:

RR-Series Cylinders are the ideal choice whenever you need to retract the plunger quickly with precise control. These popular rams are rugged enough to withstand high-cycle and demanding job site uses - making them incredibly effective within both the con



RRH603K4, REPAIR KIT

SKU: E-RRH603K4

SPECIFICATIONS:

PRODUCT DESCRIPTION

The Enerpac RRH603K4 is a repair Kit for RRH series double-acting hollow plunger cylinders.

PRODUCT DESCRIPTION:

Repair kit
Used for RRH series double acting hollow plunger cylinders



22.1 TON CAPACITY, .50 IN STROKE, LOW HEIGHT HYDRAULIC CYLINDER

SKU: E-RSM200

SPECIFICATIONS:

RSM-Series Low Profile Hydraulic Cylinders provide superior durability, safety, and quality in a compact and convenient format. They're the perfect choice for general lifting and production applications where space is limited.

A low collapsed height, s



PRODUCT DESCRIPTION:

Maximum Operating Pressure (psi)
10,000
Capacity Class (tonnage)
20
Maximum Cylinder Capacity Advance (short tons)
22.1
Stroke (in)
0.44
Collapsed Height A (in)



32.4 TON CAPACITY, .50 IN STROKE, LOW HEIGHT HYDRAULIC CYLINDER

SKU: E-RSM300

SPECIFICATIONS:

Maximum Operating Pressure (psi)
10,000
Capacity Class (tonnage)
30
Maximum Cylinder Capacity Advance (short tons)
32.4
Stroke (in)
0.5
Collapsed Height A (in)
2.31
Extended Height B (in)
2.81
Return Type
Single-Acting, Spring Return
Plunger

PRODUCT DESCRIPTION:

RSM-Series Low Profile Hydraulic Cylinders provide superior durability, safety, and quality in a compact and convenient format. They're the perfect choice for general lifting and production applications where space is limited.
A low collapsed height, sh





RSM500, 48.1 TON CAPACITY, .63 IN STROKE, LOW HEIGHT HYDRAULIC CYLINDER

SKU: E-RSM500

SPECIFICATIONS:

RSM-Series Low Profile Hydraulic Cylinders provide superior durability, safety, and quality in a compact and convenient format. They're the perfect choice for general lifting and production applications where space is limited.

A low collapsed height, s



PRODUCT DESCRIPTION:

Maximum Operating Pressure (psi)
10,000
Capacity Class (tonnage)
50
Maximum Cylinder Capacity Advance (short tons)
48.1
Stroke (in)
0.63
Collapsed Height A (in)



20 TON, 6.18 IN STROKE, HYDRAULIC TOE JACK

SKU: E-SOH236

SPECIFICATIONS:

Capacity (imperial tons)
20
Stroke (in)
6.18
Oil Capacity (in3)
32
Weight (lbs)
99.2



PRODUCT DESCRIPTION:

Toe Jacks such as the SOH236 are purpose-designed for lifting heavy items such as factory machinery. The SOH236 includes a 1.18" (30 mm) low height lifting toe to fit into small clearance gaps. This is raised using the integral hydraulic cylinder. When us



50 TON, PUNCH AND DIE SET

SKU: E-SP50100

SPECIFICATIONS:

Maximum Operating Pressure (psi)
10,000
Capacity (imperial tons)
50
Cylinder Return Type
Double-Acting, Hydraulic Return
Hole Shape
Circle
Oil Capacity Advance (in3)
17
Oil Capacity Retract (in3)
14
Weight (lbs)
255

PRODUCT DESCRIPTION:

Model: SP50100 | ECCN: EAR99 | Harmonization: 8462490050
Series: SP | Product Line: Industrial Tools
This SP50 hydraulic hole punch included in this set exerts a force of up to 50 tons - making it an effective tool for punching holes into st



PIPE BENDER SET WITH CYLINDER AND HAND PUMP, UP TO 2 IN PIPE

SKU: E-STB101H

SPECIFICATIONS:

Maximum Operating Pressure (psi)
10,000
Pump Power Source
Hand Pump
Pipe Range Nominal Size One Shot (in)
1/2 - 2
Maximum Bend Angle
90
Weight (lbs)
114

PRODUCT DESCRIPTION:

Model: STB101H | ECCN: EAR99 | Harmonization: 8462290020
Series: STB | Product Line: Industrial Tools
Makes smooth, wrinkle-free bends
Set includes genuine Enerpac cylinder, hose and manual, and hand pump
Bending shoes and bending frame ar



PRODUCT DESCRIPTION:

Model: STB221H | ECCN: EAR99 | Harmonization: 8462290020
Series: STB | Product Line: Industrial Tools
Makes smooth, wrinkle-free bends
Set includes genuine Enerpac cylinder, hose and manual, and hand pump
Bending shoes and bending frame ar



PIPE BENDER SET WITH CYLINDER AND HAND PUMP

SKU: E-STB221H

SPECIFICATIONS:

Maximum Operating Pressure (psi)
10,000
Pump Power Source
Hand Pump
Pipe Range Nominal Size One Shot (in)
1 - 2
Pipe Range Nominal Size Sweep (in)
2 1/2 - 4
Maximum Bend Angle
90
Weight (lbs)
346.0



PRODUCT DESCRIPTION:

Enerpac hydraulic couplers provide quick connection of hydraulic lines
10,000 and 11,600 psi 1/4" couplers for torque wrenches
10,000 psi 3/8" couplers for cylinders, tools and pumps
Dimension A is total length when male and female halves are connected.



T630, SPIN-ON HYDRAULIC COUPLER, COMPLETE SET

SKU: E-T630

SPECIFICATIONS:

PRODUCT DESCRIPTION
The T630 Enerpac Coupler Set is the perfect choice for any hydraulic system. High quality and durable construction allow these couplers to perform reliably, even in the toughest applications. With a quick-connect design, installation i



PRODUCT DESCRIPTION:

V66, V66NV: Manually Operated Check Valves include a built-in relief valve. They allow the operator to switch the direction of the fluid quickly, making it suitable for load holding applications with single and double-acting cylinders. The V66NV model fea



MANUALLY OPERATED CHECK VALVE WITH BUILT-IN RELIEF VALVE

SKU: E-V66

SPECIFICATIONS:

V66, V66NV: Manually Operated Check Valves include a built-in relief valve. They allow the operator to switch the direction of the fluid quickly, making it suitable for load holding applications with single and double-acting cylinders. The V66NV model fea



PRODUCT DESCRIPTION:

Choose from a selection of needle valves perfect for controlling the speed of your hydraulic cylinder. Depending upon the model chosen, you may also use the valve as a shut-off valve for temporary load holding, or for gauge snubbing. Alternatively, selec



V82, NEEDLE VALVE, 3/8 IN NPTF OIL PORT

SKU: E-V82

SPECIFICATIONS:

Choose from a selection of needle valves perfect for controlling the speed of your hydraulic cylinder. Depending upon the model chosen, you may also use the valve as a shut-off valve for temporary load holding, or for gauge snubbing. Alternatively, selec



PUMP MOUNTED DIRECTIONAL CONTROL VALVE, SOLENOID, 4-WAY, 3-POSITION, TANDEM CENTER, LOCKING

SKU: E-VE43-115

SPECIFICATIONS:

Maximum Operating Pressure (psi)
10,000
Valve Type
4-Way, 3-Position, Tandem Center, Locking
Function
Advance / Hold / Retract
Cylinder Compatibility
Double-Acting
Mounting Location
Pump Mounted
Valve Operation
Solenoid
Flow Capacity (gal/min)

PRODUCT DESCRIPTION:

Advance/Hold/Retract operation of double-acting cylinders
Solenoid Operation
Pump mounting will retrofit on most Enerpac Pumps
Standard "locking" feature on VE Series 3-position valves
User adjustable relief valves allow the operator to easily set the



WCB750, HYDRAULIC CUTTERHEAD REPLACEMENT BLADE

SKU: E-WCB750

SPECIFICATIONS:

Maximum Material Hardness
HRC 60-62
Compatible Products
WHC750, WMC580, WMC750



PRODUCT DESCRIPTION:

60-62 HRc Hardened replacement blade



13 TON CAPACITY, HYDRAULIC CUTTERHEAD



SKU: E-WHC-2000

SPECIFICATIONS:

Maximum Operating Pressure (psi)
10,000
Capacity (imperial tons)
13
Cutter Head Return Type
Single-Acting, Spring Return
Oil Capacity (in3)
7.3
Length (in)
15
Steel Wire Rope Hempcore Or IWRC Cutting Capacity (in)
1.00
Round Bar Copper Wire Or

PRODUCT DESCRIPTION:

Rotating heads for operator convenience
Guillotine action for efficient operation
Carrying bag included for easy carrying and tool protection
Velcro straps to secure handles on larger models for easy transportation
Spring return on all models
Lightw



20 TON CAPACITY, HYDRAULIC CUTTERHEAD



SKU: E-WHC1250

SPECIFICATIONS:

Maximum Operating Pressure (psi)
10,000
Capacity (imperial tons)
20
Cutter Head Return Type
Single-Acting, Spring Return
Oil Capacity (in3)
8.2
Length (in)
11
Steel Wire Rope Hempcore Or IWRC Cutting Capacity (in)
1.25
Round Bar Copper Wire Or

PRODUCT DESCRIPTION:

Rotating heads for operator convenience
Guillotine action for efficient operation
Carrying bag included for easy carrying and tool protection
Velcro straps to secure handles on larger models for easy transportation
Spring return on all models
Lightwe



4 TON CAPACITY, HYDRAULIC CUTTERHEAD

SKU: E-WHC750

SPECIFICATIONS:

Maximum Operating Pressure (psi)
10,000
Capacity (imperial tons)
4
Cutter Head Return Type
Single-Acting, Spring Return
Oil Capacity (in³)
1.2
Length (in)
5
Steel Wire Rope Hempcore Or IWRC Cutting Capacity (in)
0.63
Round Bar Copper Wire Or B



PRODUCT DESCRIPTION:

Rotating heads for operator convenience
Guillotine action for efficient operation
Carrying bag included for easy carrying and tool protection
Velcro straps to secure handles on larger models for easy transportation
Spring return on all models
Lightwe



20 TON CAPACITY, SELF-CONTAINED HYDRAULIC CUTTER

SKU: E-WMC1250

SPECIFICATIONS:

Maximum Operating Pressure (psi)
10,000
Capacity (imperial tons)
20
Cutter Head Return Type
Single-Acting, Spring Return
Length (in)
26.75
Replacement Blade Model Number
WCB1250
Steel Wire Rope Hempcore Or IWRC Cutting Capacity (in)
1.25
Round

PRODUCT DESCRIPTION:

Rotating heads for operator convenience
Guillotine action for efficient operation
Carrying bag included for easy carrying and tool protection
Velcro straps to secure handles on larger models for easy transportation
Spring return on all models
Lightwe



4 TON CAPACITY, SELF-CONTAINED HYDRAULIC CUTTER



SKU: E-WMC750

SPECIFICATIONS:

Maximum Operating Pressure (psi)
10,000
Capacity (imperial tons)
4
Cutter Head Return Type
Single-Acting, Spring Return
Length (in)
15
Replacement Blade Model Number
WCB750
Steel Wire Rope Hempcore Or IWRC Cutting Capacity (in)
0.63
Round Bar

PRODUCT DESCRIPTION:

Model: WMC750 | ECCN: EAR99 | Harmonization: 8467891000
Series: WMC | Product Line: Industrial Tools
Rotating heads for operator convenience
Guillotine action for efficient operation
Carrying bag included for easy carrying and tool protect



WR5, 1.00 TON, HYDRAULIC WEDGIE AND SPREAD CYLINDER, 3.7 IN MAXIMUM SPREAD



SKU: E-WR5

SPECIFICATIONS:

When you need a compact hydraulic wedge spreader for tight spaces the WR5 is the optimum choice. This single-acting tool uses powerful hydraulic force to expand up to 3.7" (94mm) and retracts with a spring return system.
Please note that the maximum load

PRODUCT DESCRIPTION:

Maximum Operating Pressure (psi)
10,000
Maximum Spread (in)
3.7
Power Source
Hydraulic
Spreading Force (imperial tons)
1.00
Maximum Spreading Force (ton)



TWO SPEED, AIR HYDRAULIC TORQUE WRENCH PUMP



SKU: E-ZA4204TX-Q

SPECIFICATIONS:

Model: ZA4204TXQ | ECCN: EAR99 | Harmonization: 8413500070
Series: ZA4T | Product Line: Bolting Tools
The ZA4-Series pump is best suited to power medium to large size torque wrenches. Patent-pending Z-Class technology provides high by-pass pr

PRODUCT DESCRIPTION:

Model: ZA4204TXQ | ECCN: EAR99 | Harmonization: 8413500070
Series: ZA4T | Product Line: Bolting Tools
The ZA4-Series pump is best suited to power medium to large size torque wrenches. Patent-pending Z-Class technology provides high by-pass pr



ZE4410SB, ELECTRIC HYDRAULIC PUMP, 4/3 SOLENOID VALVE, ELECTRIC BOX AND LCD, 2.5 GALLON USABLE OIL, 60 IN3/MIN OIL FLOW AT



SKU: E-ZE4410SB

SPECIFICATIONS:

Model: ZE4410SB | ECCN: EAR99 | Harmonization: 8413500070
Series: ZE | Product Line: Industrial Tools
Enerpac ZE4 electric hydraulic pumps are based on our Z Pump platform - our most efficient and market proven design. Z-Class high-efficiency

PRODUCT DESCRIPTION:

Maximum Operating Pressure (psi)
10,000
Cylinder Compatability
Double-acting
Reservoir Capacity (in3)
601
Usable Oil Capacity (gal)
2.5
Maximum Flow at Rated Pressure



PRODUCT DESCRIPTION:

Model: ZE4420MB | ECCN: EAR99 | Harmonization: 8413500070
Series: ZE | Product Line: Industrial Tools
Enerpac ZE4 electric hydraulic pumps are based on our Z Pump platform - our most efficient and market proven design. Z-Class high-efficiency



ELECTRIC HYDRAULIC PUMP, 4/3 MANUAL VALVE, WITHOUT ELECTRIC BOX OR LCD, 5.0 GALLON USABLE OIL, 60 IN3/MIN OIL FLOW AT 10,000 PSI,

SKU: E-ZE4420MB

SPECIFICATIONS:

Maximum Operating Pressure (psi)
10,000
Cylinder Compatibility
Double-acting
Reservoir Capacity (in3)
1,201
Usable Oil Capacity (gal)
5
Maximum Flow at Rated Pressure
60 in3/min
Output Flow Rate (in3/min) 100 psi
650
Output Flow Rate (in3/min)



PRODUCT DESCRIPTION:

Model: ZU4208SB | ECCN: EAR99 | Harmonization: 8413500070
Series: ZU | Product Line: Industrial Tools
Enerpac ZU Series Electric Hydraulic Pumps provide a high power to weight ratio in a portable and durable format. They feature our Z-Class



ELECTRIC HYDRAULIC PUMP, PRO, 3/2 SOLENOID VALVE WITH PENDANT, LCD DISPLAY

SKU: E-ZU4208SB

SPECIFICATIONS:

Maximum Operating Pressure (psi)
10,000
Cylinder Compatibility
Single-acting
Reservoir Capacity (in3)
416
Usable Oil Capacity (gal)
2
Maximum Flow at Rated Pressure
60 in3/min
Output Flow Rate (in3/min) 100 psi
700
Output Flow Rate (in3/min) 7



PRODUCT DESCRIPTION:

Model: ZU4208TB-Q | ECCN: EAR99 | Harmonization: 8413500070
Series: ZU4T | Product Line: Bolting Tools
Patented Z-Class pump technology provides high by-pass pressures for increased productivity—important in applications using long hose run



ELECTRIC HYDRAULIC TORQUE WRENCH PUMP, PRO, LCD DISPLAY, 1.75 GALLON USABLE OIL, 115V

SKU: E-ZU4208TB-Q

SPECIFICATIONS:

Maximum Operating Pressure (psi)
10,000
For Use With Torque Wrenches
For use with all Enerpac torque wrenches
Reservoir Capacity (in3)
416
Usable Oil Capacity (gal)
1.75
Maximum Flow at Rated Pressure
60 in3/min
Output Flow Rate (in3/min) 100 ps



PRODUCT DESCRIPTION:

Enerpac ZU Series Electric Hydraulic Pumps provide a high power to weight ratio in a portable and durable format. They feature our Z-Class technology pump platform - widely recognized as the market leader in industrial hydraulic pump technology. The high-



ELECTRIC HYDRAULIC PUMP, STANDARD, 4/3 MANUAL VALVE, 115V

SKU: E-ZU44408MB

SPECIFICATIONS:

Maximum Operating Pressure (psi)
10,000
Cylinder Compatability
Double-acting
Reservoir Capacity (in3)
416
Usable Oil Capacity (gal)
2
Maximum Flow at Rated Pressure
60 in3/min
Output Flow Rate (in3/min) 100 psi
700
Output Flow Rate (in3/min) 7



PRODUCT DESCRIPTION:

Model: ZU4408SB | ECCN: EAR99 | Harmonization: 8413500070
Series: ZU | Product Line: Industrial Tools
Enerpac ZU Series Electric Hydraulic Pumps provide a high power to weight ratio in a portable and durable format. They feature our Z-Class



ELECTRIC HYDRAULIC PUMP, PRO, 4/3 SOLENOID VALVE WITH PENDANT, LCD DISPLAY, 115V, 2.0 GALLON USABLE OIL

SKU: E-ZU4408SB

SPECIFICATIONS:

Maximum Operating Pressure (psi)
10,000
Cylinder Compatability
Double-acting
Reservoir Capacity (in3)
416
Usable Oil Capacity (gal)
2
Maximum Flow at Rated Pressure
60 in3/min
Output Flow Rate (in3/min) 100 psi
700
Output Flow Rate (in3/min) 7



PRODUCT DESCRIPTION:

Model: ZU4420MB | ECCN: EAR99 | Harmonization: 8413500070
Series: ZU | Product Line: Industrial Tools
Enerpac ZU Series Electric Hydraulic Pumps provide a high power to weight ratio in a portable and durable format. They feature our Z-Class



ELECTRIC HYDRAULIC PUMP, STANDARD, 4/3 MANUAL VALVE, 115V, 5.0 GALLON USABLE OIL

SKU: E-ZU4420MB

SPECIFICATIONS:

Maximum Operating Pressure (psi)
10,000
Cylinder Compatability
Double-acting
Reservoir Capacity (in3)
1,201
Usable Oil Capacity (gal)
5
Maximum Flow at Rated Pressure
60 in3/min
Output Flow Rate (in3/min) 100 psi
700
Output Flow Rate (in3/min)



15 Gomez Street
San Fernando,
Trinidad and Tobago

Tel: 1-868-235-4475
WhatsApp: 1-868-298-2964
sales@hsltt.com

www.HSLtt.com



facebook.com/southernsupplieslimited/



instagram.com/hsltrinidad/



youtube.com/user/SouthernSuppliesLtd