

A male worker is shown in profile, facing left. He is wearing a white hard hat, clear safety glasses, and a bright red protective suit with reflective silver stripes on the shoulders, chest, and arms. He is also wearing yellow and blue work gloves. He is operating a large, blue-handled valve on a piece of industrial equipment. The background consists of a grassy field under a cloudy sky. In the top right corner, there is an orange banner with the company logo.

FLAME
INDUSTRIES

CONTENTS

04-05 ABOUT FLAME

06-07 EMBROIDERY

08-09 COVERALLS

10-11 SHIRT AND PANTS

12-13 LABCOATS

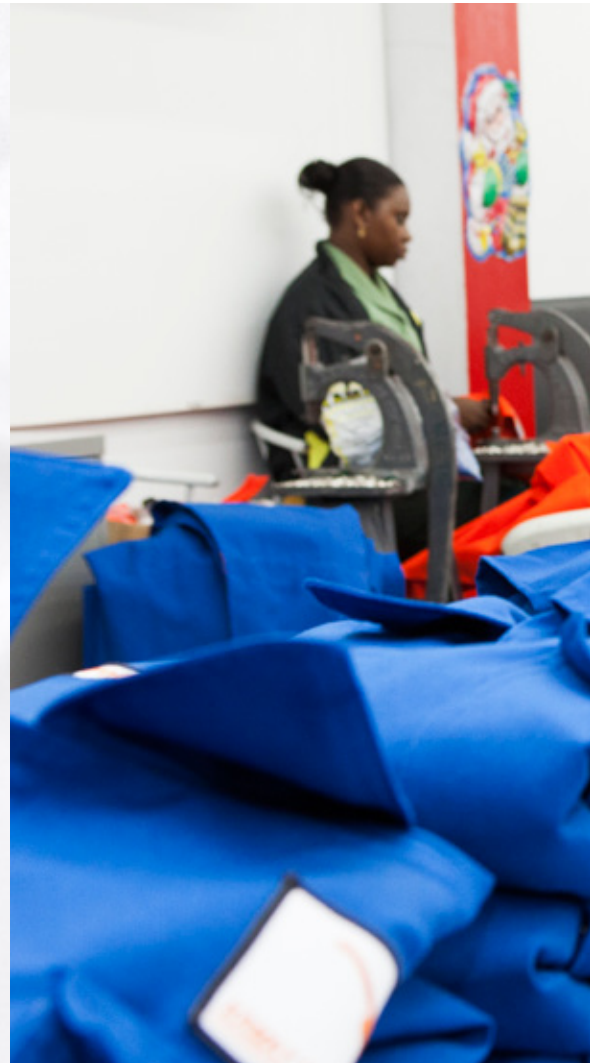
14-15 JACKETS

16-17 CUSTOM COVERALLS

18-19 FABRIC TYPES AND COLOURS

20-25 SIZING CHARTS

26-27 OTHER INDUSTRIAL WORK
WEAR OFFERED BY FLAME









WHAT WE OFFER

Flame's safety garments has been on the market for over 25 years and have set the standard in design and quality for industrial work wear on the island of Trinidad and Tobago. Flame does not compromise on quality when it comes to the production of the safety garments branded as Flame, we take pride in the quality work and craftsmanship that goes into each of our garments.

Our customers range from the self employed tradesman seeking the best for himself, to the project manager looking to outfit his crew, they all want the "Flame advantage." Our garments have a demand worldwide, we have exported garments to various countries regionally and internationally.

What sets flame apart from the rest? Like a fine dish the secret is the recipe.

Quality garments come from quality factories. At flame we have the formula for quality and affordability. Our years of experience in the industrial safety garment business, investment in technology and our investment in our people eliminates mistakes and emphasizes quality in the garments we produce. We are continuously improving our garments through research and development. We always strive to educate ourselves and our customers on the relevant changes in the industry. We are committed to selling products that save lives and improve the quality of the life of a worker in the event of an accident. We are inspired to find stronger and safer textiles through new innovations.

That's why our customers come to us and keep coming back. Our quality is second to none; costs are affordable and reflective of the value delivered.

Whether you're a small company, a company with thousands of employees, Flame Industries can supply you with all your safety apparel needs.

Experience the flame advantage today!

Embroidery

Flame Industries is the place to find the islands highest-quality digital embroidery service. Hats, shirts, jackets, you name it, if you can sew on it, so can we! We provide only the finest custom embroidered products available.

Digitizing is the process of converting your artwork design into a digital embroidery pattern that can be read by the embroidering machines. A skilful digitizing artist uses embroidery digitizing software to interpret your particular artwork design to form a digital embroidery pattern. Digitizing is both a technical and a creative process. It's much more than most people might imagine. While the digitizer may begin with a scan or a graphic file, he has to tell the embroidery machine where to put each stitch, and what order to sew your design - including where to stop, trim the threads and switch to a different colour. Poor digitization can lead to a poor-looking design or one that is very hard to sew.

We're sure you'll be very pleased with the results. Whether you need promotional giveaways or if you're starting your own fashion line, will give your job the specialized attention it deserves.







COVERALLS

Front Features (Standard)

- Double stitching cotton thread for added strength. Double stitching with dupont nomex thread for consistency with fire retardant fabrics.
- Double head, double stitched two way brass zippers, for ease of accessibility to under garments and comfort.
- Snaps placed on fold that covers zip for added safety, comfort and durability. Hidden Snaps on fold that covers zip for added safety on fire retardant coveralls.
- Two double stitched front chest pockets, for durability. One flapped pocket with snap on our fire retardant garments.
- 1" wide reflective strips on sleeves, legs and backs for added visibility and safety
- Double snaps on cuffs for adjustable fit.
- Double stitched front patch pockets on pants for added storage and convenience.

Back Features (Standard)

- Pleated shoulders for manoeuvrability
- Two double stitched back pockets for durability
- Featuring a durable double stitched tool pocket for convenience and additional storage.
- Double stitch on seat for added strength.
- Double stitched waist band for durability.
- 1-1/4" elastic waist band at back for comfort and manoeuvrability
- Side seams double stitched for added strength.
- Standard Options Coveralls;
 - Long sleeve or short sleeve
 - Variety of colours
 - Variety of Fabric types

Customized options Coveralls:

Flame also offers custom designs of their garments based on customer requirements. Go to page 16 to see custom produced sample





SHIRT AND PANTS

Shirt Design Features (Standard)

- Double stitching cotton thread for added strength. Double stitching with DuPont Nomex thread for consistency with fire retardant fabrics.
- Snaps for ease of accessibility. Hidden snaps on our fire retardant garments for safety.
- Two double stitched front chest pockets, for durability. One flapped pocket with snap on our fire retardant garments.
- 1" wide reflective strips on sleeves and back for added visibility and safety
Double snaps on cuffs for adjustable fit.

Pants- Front Features (Standard)

- Pants waist sewn with loops for use with belt.
Bras zipper double stitched on pants.
Double stitched front patch pockets on pants for added storage and convenience.

Pants- Back Features (Standard)

- 1-1/4" elastic waist band at back for comfort and maneuverability
Two double stitched back pockets for durability
Featuring a durable double stitched tool pocket for convenience and additional storage.
- Double stitch on seat for added strength.
Side seams double stitched for added strength.

Standard Options Shirt and Pants;

- >Long sleeve or short sleeve
- >Variety of colours
- >Variety of Fabric types



LAB COATS

Standard Design Features
Polly Cotton Labcoats and
Fire Retardant

Front Features

- Double stitching cotton thread for added strength. Double stitching with DuPont Nomex thread for consistency with fire retardant fabrics.
- Snaps for ease of accessibility. Hidden snaps on our fire retardant garments for safety.
- Two double stitched front waist pockets, for durability. .
- Double snaps on cuffs for adjustable fit.

Back Features

- Slit on back for manoeuvrability





L. SALK

MR. D. LABRACCIO
TECH



JACKETS

Standard Design Features
Polly Cotton and Fire
Retardant Jackets

Front Features

- Double stitching cotton thread for added strength. Double stitching with DuPont Nomex thread for consistency with fire retardant fabrics.
- Snaps for ease of accessibility. Hidden snaps on our fire retardant garments for safety.
- Hidden pocket for safety
- Double snaps on cuffs for adjustable fit.

Back Features

- Pleated shoulders for manoeuvrability
- Reflective strip on back for added visibility and safety.





CUSTOM DESIGNED COVERALL

This is an example of a coverall designed by BPTT, produced by Flame Industries. The design is required for persons operating on BPTT's facilities and require fire retardant protection and visibility. The coveralls are made from DuPont Nomex 6.0 oz Orange colour fabric

Front Features

- Double stitched Collar
- Snap Close on neck line
- Double stitching with DuPont Nomex thread for consistency with fire retardant fabrics.
- Double head, double stitched two way brass zippers, for ease of accessibility to under garments and comfort.
- Hidden Snaps on fold that covers zip for added safety on fire retardant coveralls. Two double stitched front chest pockets, for durability.
- Double snaps on cuffs for adjustable fit.
- Double stitched front patch pockets on pants for added storage and convenience.

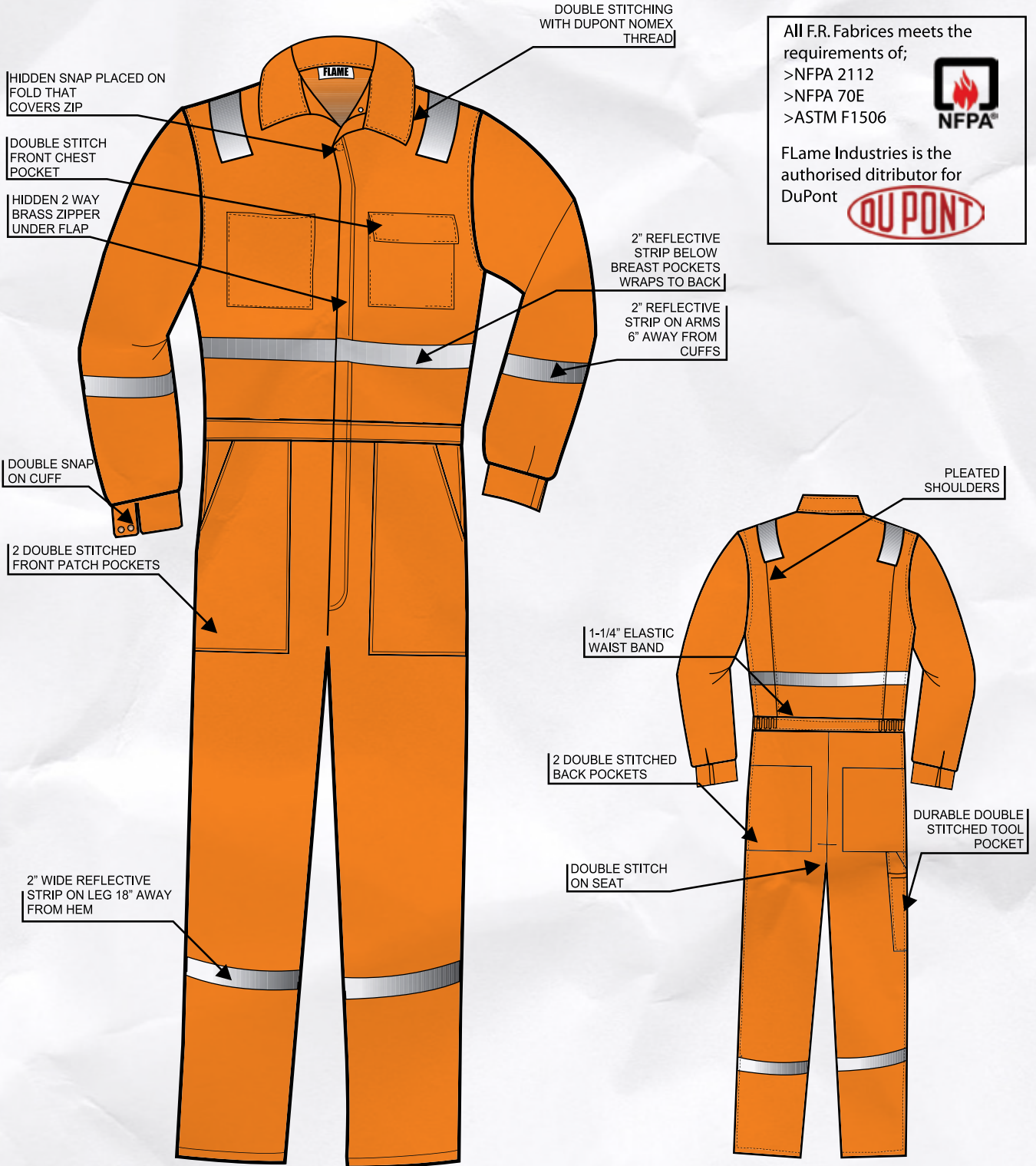
Back Features

- Pleated shoulders for manoeuvrability
- Two double stitched back pockets for durability
- Featuring a durable double stitched tool pocket for convenience and additional storage.
- Double stitch on seat for added strength. 1-1/4" elastic waist band at back for comfort and manoeuvrability
- Side seams double stitched for added strength.
- 2" Reflective strip on shoulders, which span across to back, for added visibility from above.
- 2" Reflective strip below breast pockets, which wrap around the back, for increased visibility.
- 2" reflective strip on Legs 18" away from hem.
- 2" reflective strip on arms 6" away from cuffs.



SPECIFICATION SHEETS

FLAME INDUSTRIES- SPECIFICATION CHART BP COVERALL



All F.R. Fabrics meets the requirements of;

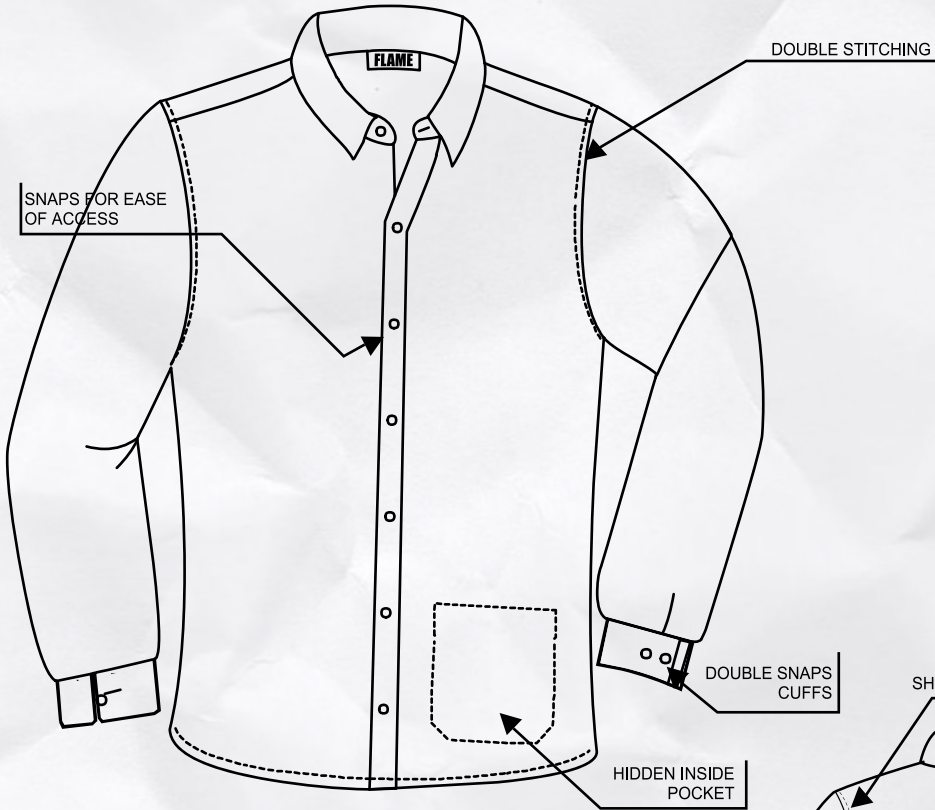
- >NFPA 2112
- >NFPA 70E
- >ASTM F1506

Flame Industries is the authorised distributor for DuPont



DuPont™
NOMEX® IIIA

3M Scotchlite™
Reflective Material

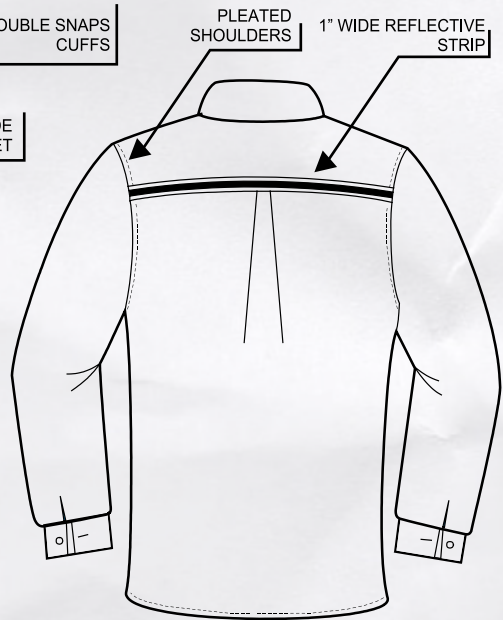


All F.R. Fabrics meets the requirements of;

- >NFPA 2112
- >NFPA 70E
- >ASTM F1506

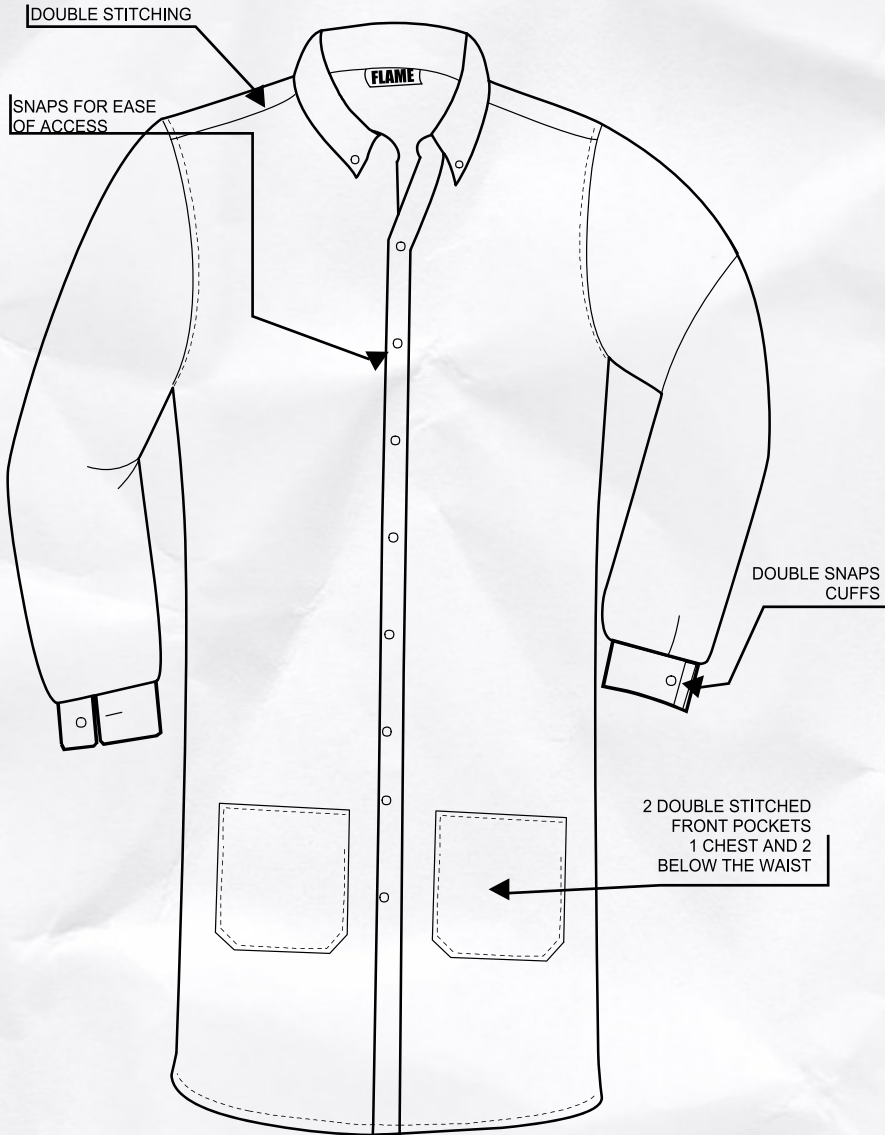


Flame Industries is the authorised distributor for DuPont



FLAME INDUSTRIES- SPECIFICATION CHART LABCOATS

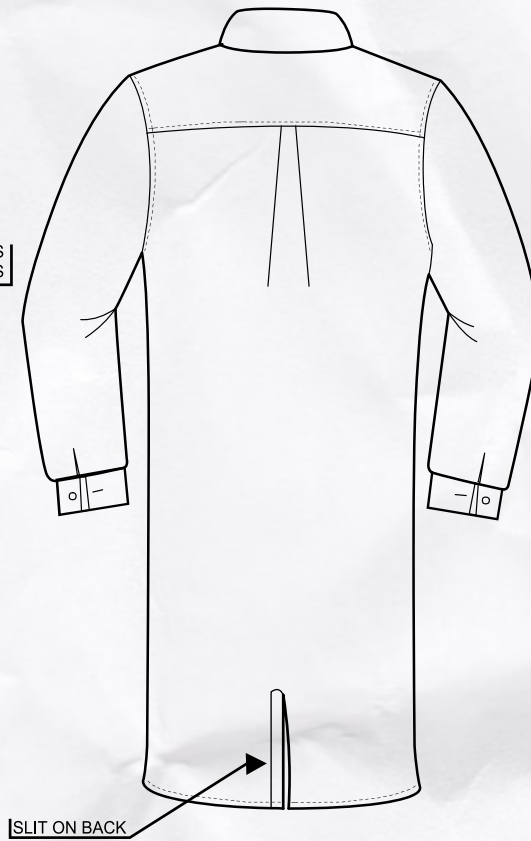
FLAME INDUSTRIES- SPECIFICATION CHART LABCOATS



All F.R. Fabrics meets the requirements of;
>NFPA 2112
>NFPA 70E
>ASTM F1506

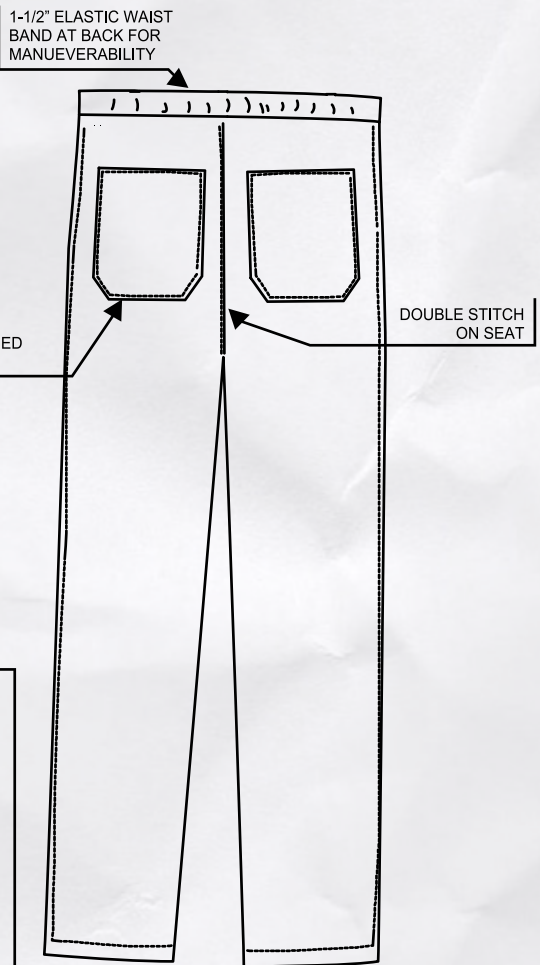
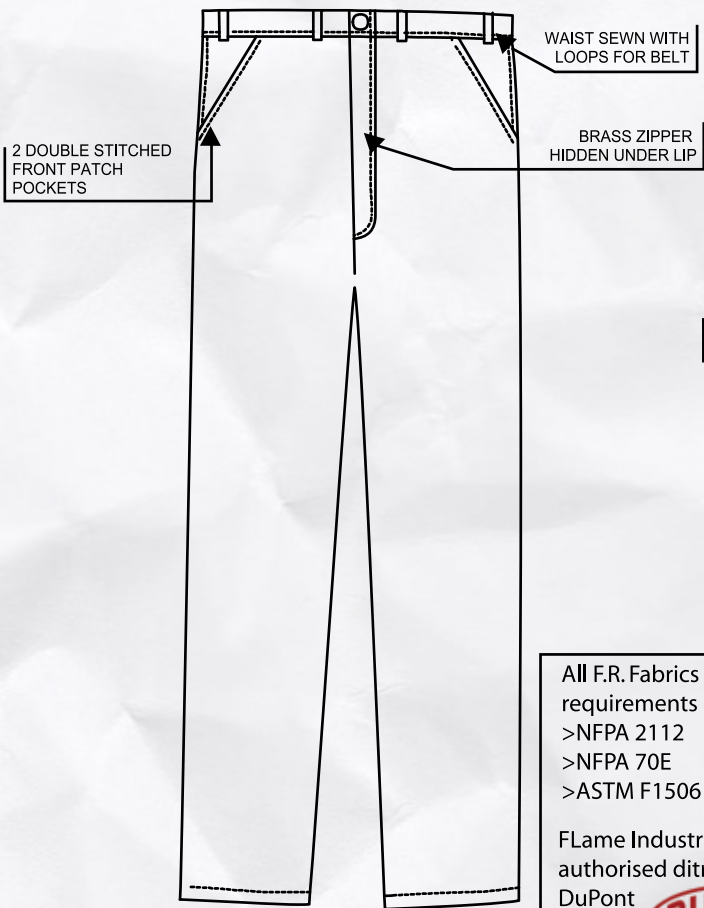
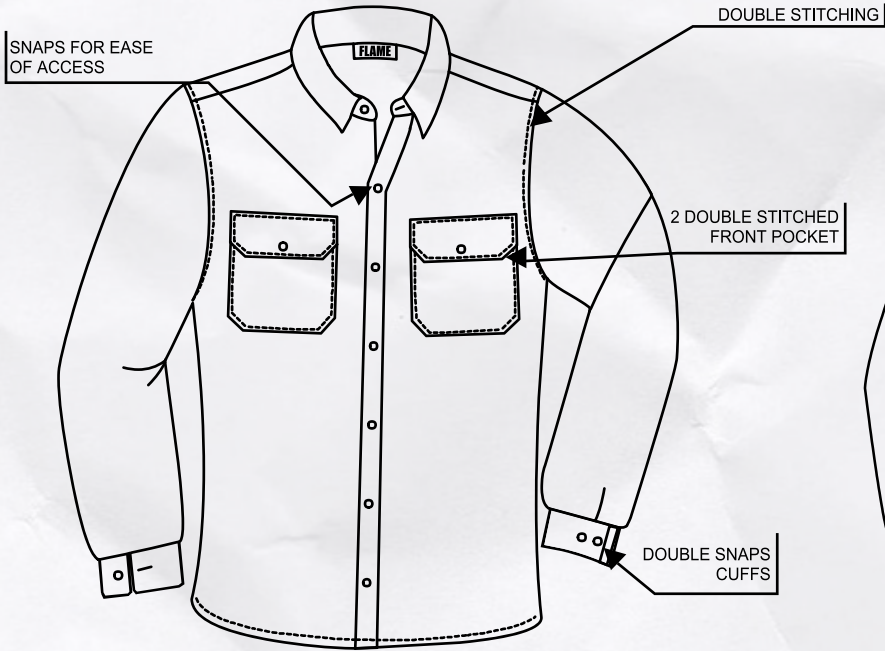


Flame Industries is the authorised distributor for DuPont



DuPont™
NOMEX® IIIA

3M Scotchlite™
Reflective Material



All F.R. Fabrics meets the requirements of;

- >NFPA 2112
- >NFPA 70E
- >ASTM F1506

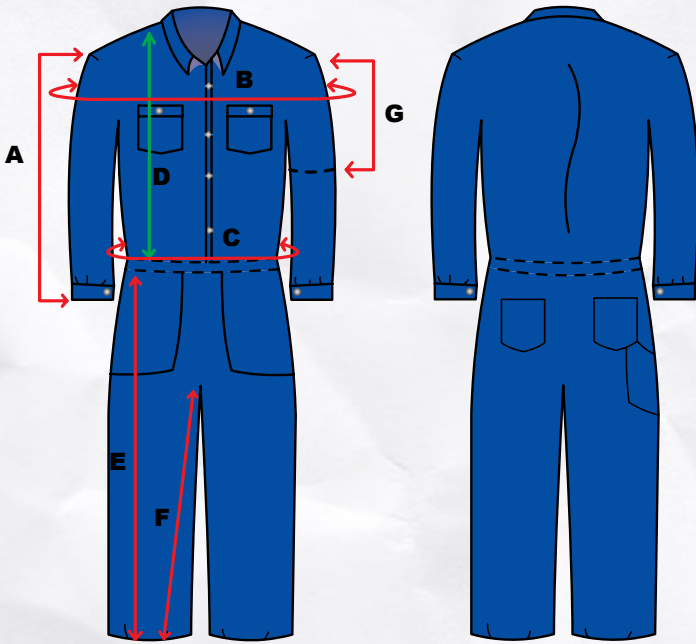
Flame Industries is the authorised ditributor for DuPont



SIZING CHARTS

FRONT

BACK



COVERALL DIMENSIONS

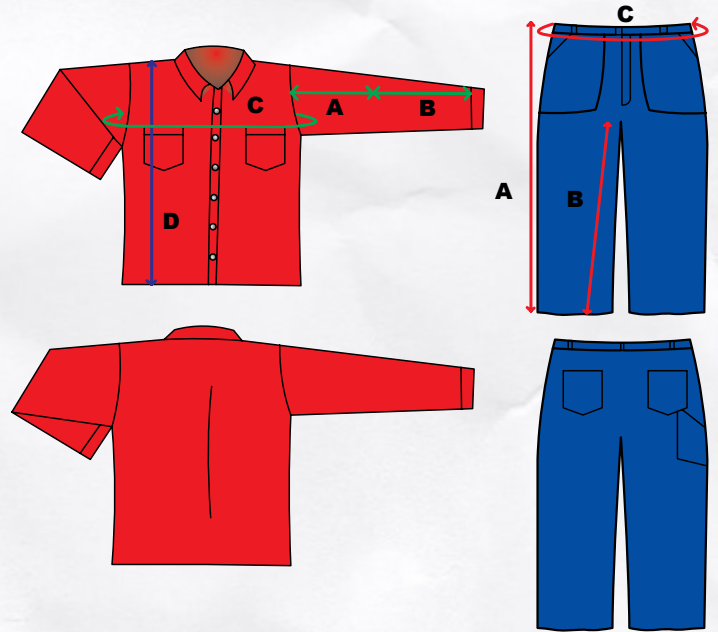
	S	M	L	XL	XXL
A	22"	23"	24"	24"	26"
B	38"	40"	42"	44"	48"
C	30"	34"	36"	38"	40"
D	17"	20"	22"	23"	24"
E	39"	40"	41"	42"	43"
F	29"	30"	30"	30"	31"
G (short sleeve)	9"	10"	10"	10"	11"

Dimensions are in Inches

Dimensions "B" and "C" represents total chest and waist circumference

FRONT

BACK



SHIRT DIMENSIONS

	S	M	L	XL	XXL
A	9"	9"	10"	10"	11"
B	24"	24"	25"	25"	26"
C	50"	52"	54"	56"	58"
D	29"	30"	31"	31"	32"

Dimension "C" represents total waist and chest circumference

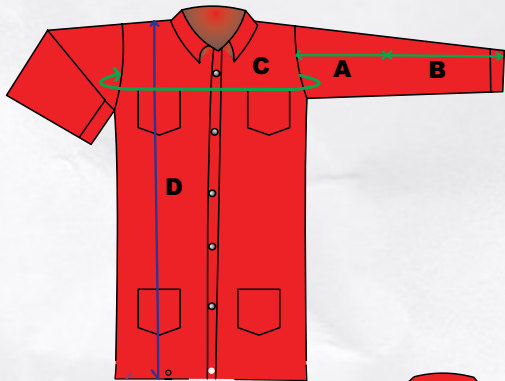
Dimensions Shown are in Inches

PANTS DIMENSIONS

	S	M	L	XL	XXL
A	40"	41"	42"	43"	44"
B	29"	30"	31"	31"	32"
C	28"-31"	32"-36"	37"-40"	41"-44"	45"-48"

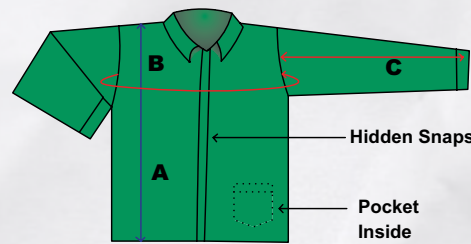
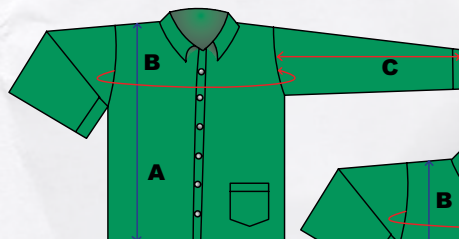
We offer the right fit, visit our website, www.flamett.com/charts.html for more of our sizing charts for all of the garments we offer.

FRONT



BACK

FRONT



BACK

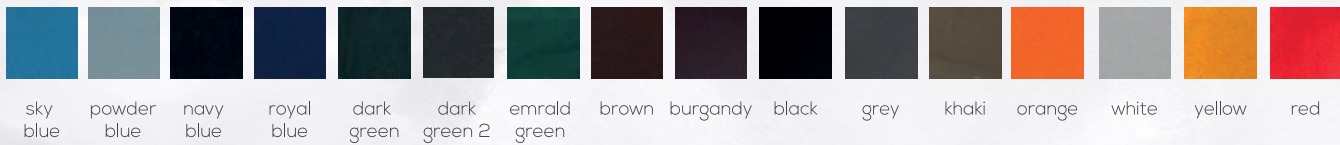


	M	L	XL	XXL
	10"	10"	10"	11"
	22"	23"	23"	24"
	45"	46"	47"	48"
	40"	42"	42"	44"

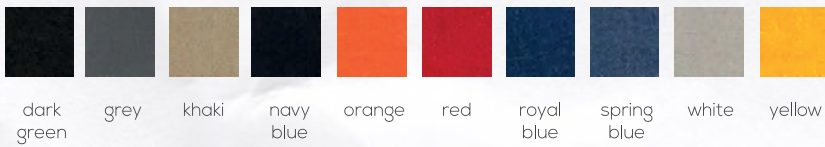
	M	L	XL	XXL
A	31"	31"	31.5"	32"
B	50"	52"	54"	56"
C	24.5	24.5"	25"	26"

FABRIC TYPES AND

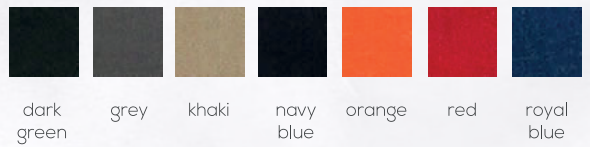
Polyester Colour Swatches



Dupont Nomex 4.0 oz Colour Swatches



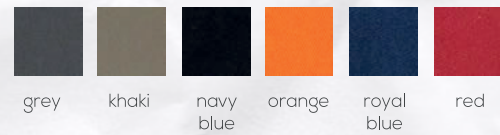
Dupont Nomex 6.0 oz Colour Swatches



Westex Indura Colour Swatches



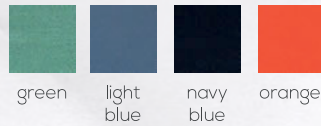
100% Cotton Colour Swatches



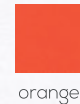
Itex Banox



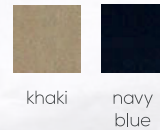
Whip Chord



Tescate Plus



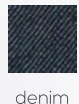
Protera



Itex



Springfield



COLOURS

Flame resistance is the characteristic of a fabric that causes it to self-extinguish when the source of ignition is removed. The most commonly used test method is ASTM D6413* Standard Test Method for Flame Resistance of Textiles (Vertical Test).

The vertical flame test is a test method with no pass/fail requirements. Industry established standards range from 4" to 6" (100 mm to 150 mm) maximum char lengths. It is very important for flame resistant fabrics to self-extinguish.

Fabrics that self-extinguish after the source of ignition is removed can dramatically reduce body burn percentage and increase the chance for survival. However, char length measurements by themselves have no correlation to the protection afforded by a flame resistant fabric.

At Flame Industries we are continuously improving our garments through research and development. We always strive to educate ourselves and our customers on the relevant changes in the industry. We are committed to selling products that save lives and improve the quality of the life of a worker in the event of an accident.

We are inspired to find stronger and safer textiles through new innovations. All our flame resistant material complies with NFPA 2112, NFPA 70E and ASTM F1506 standards.

Flame Industries limited is an authorised distributor for DuPont products such as Nomex, Tyvex and Thychem disposable Coveralls, DuPont Protera, Tecasafe, Indura Ultra soft, Banox, just to name a few.





MARINE APPAREL



DISPOSABLE SUITS/
CHEMICAL SUITS

OTHER INDUSTRIAL WORK WEAR OFFERED BY FLAME

Chemical Suits

Great for chemical plants, refineries, environmental cleanups and plant turnarounds

Features

Tough scrim material double coated with two thick layers of PVC for a combined thickness of .42 mm.

Limited Flammability

Roomy construction

Quick release suspenders

Offers great protection against many chemicals and acids

Green color for easy identification

Disposable Suits

Garments and materials that work in your industry. Whether you're in the chemical, agricultural, food processing, manufacturing or maintenance business, there's an industry-leading DuPont material suited to the job you need to get done.



DuPont™ Tyvek® is the material created by DuPont scientists and engineers with built-in protection that can't be abraded or worn away. And now Tyvek® garments deliver our unique comfort fit design. That means workers have a greater range of movement, improved mobility, a more tailored fit and better overall comfort.



DuPont™ Tychem® QC is the garment you need for more than dry particulate protection. Tychem® QC helps protect against light liquid splash and occasional contact with pesticides, inorganic acids, alkalis and acids. And with the strength of Tyvek®, this is one of the more comfortable protective garments available.

Rain Wear

It's Hard to beat a Classic! MCR's Classic Series Rainwear. The Classic Series Material is the most popular in the Industry. It combines the strength and waterproof qualities of PVC with the durability of a polyester backing. Come back to the Classics for protective wear needs! Industry Applications Perfect for construction, utilities, airlines, municipalities and more.

Marine Apparel

Give your hard-working crew the best on deck with the Stearns Vest. Each member of your crew will enjoy the ultimate in both performance and comfort while wearing the best lifevest in the industry. With work vests and protective suits for nearly every job in and out of the water, the Stearns brand takes pride in bringing added safety to world-class crews around the world.

Flame Industries is proud to be a part of
the SSL Group of Companies



FLAME: 5A GOMEZ STREET, SAN FERNANDO, TRINIDAD, W.I.

TEL: 868 657 5194/1057 868 652 7756/8816 **FAX:** 868 657 9832

WEBSITE: www.flamett.com